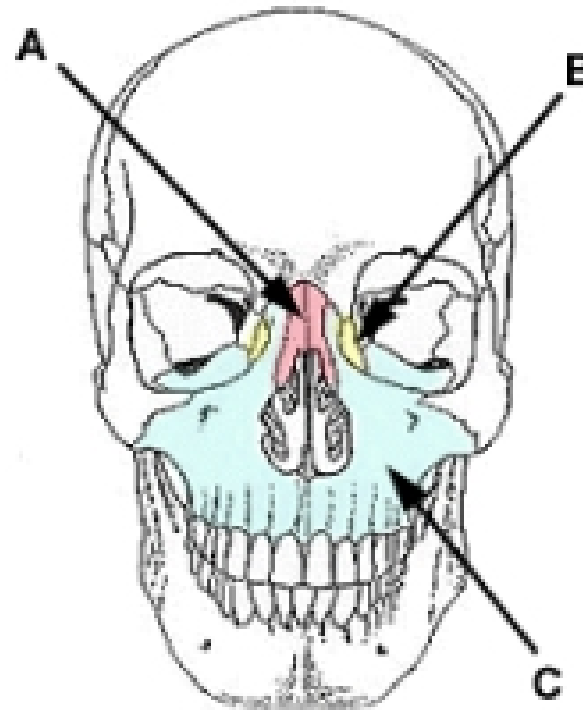


→ diploe; an arrangement of a layer of spongy bone between 2 layers of compact bone on the calvaria

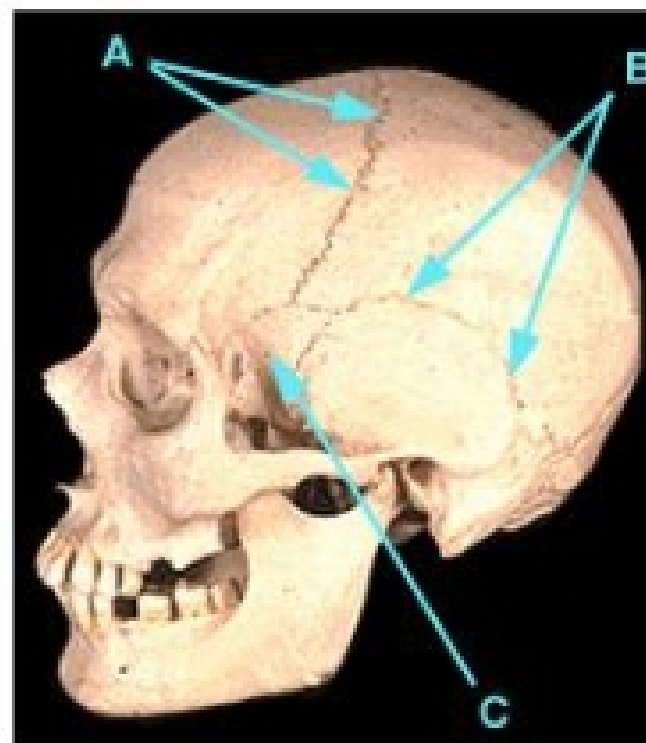


A → the nasal bone

B → the lacrimal bone

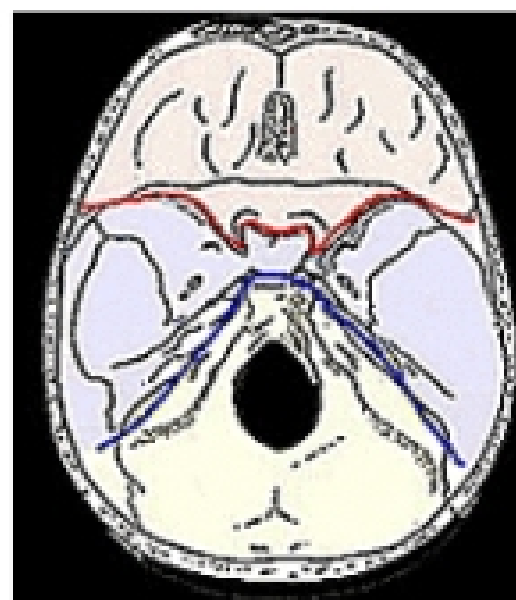


The general term for lines such as those at A ⇨ and B ⇨ is sutures; the lines where the bones of the skull fuse after birth.



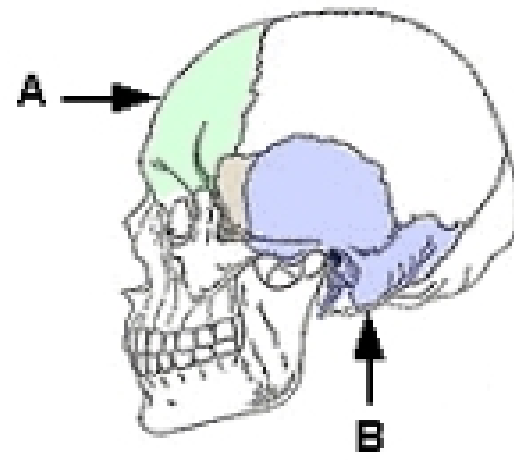
The red line separates the anterior cranial fossa from the middle cranial fossa.

The anterior cranial fossa is formed from 3 bones: frontal, ethmoid, and lesser wing of sphenoid.

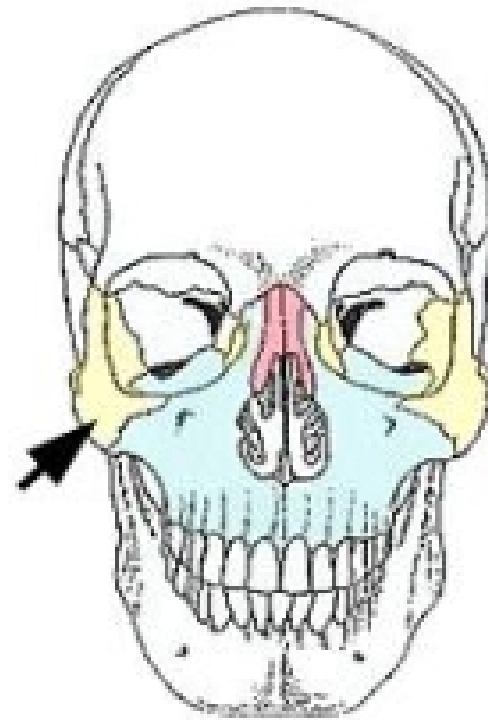


The greater wing of the sphenoid bone is a part of the middle cranial fossa.

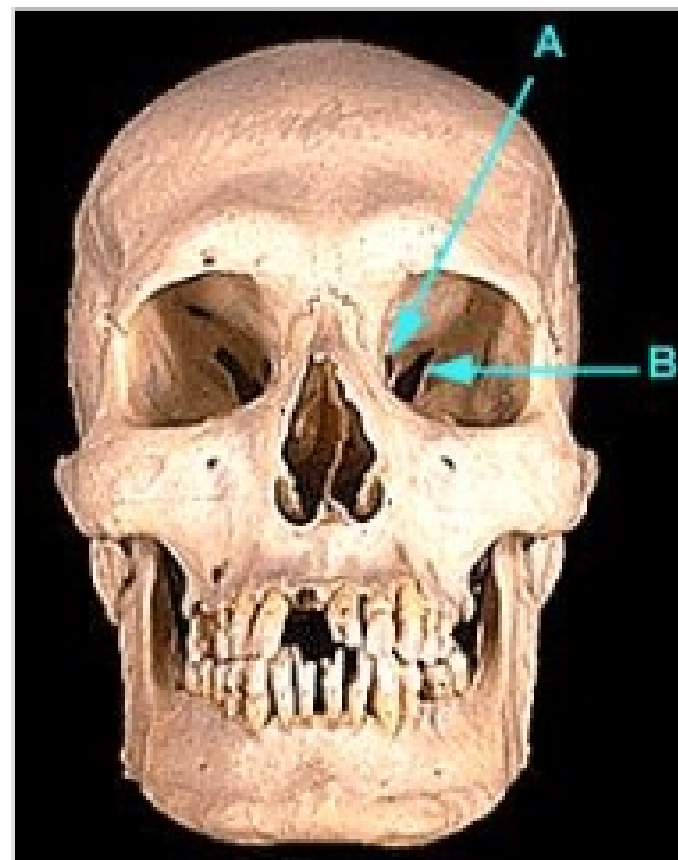
B → the mastoid process of the temporal bone



→ the zygomatic bone; one of the facial bones

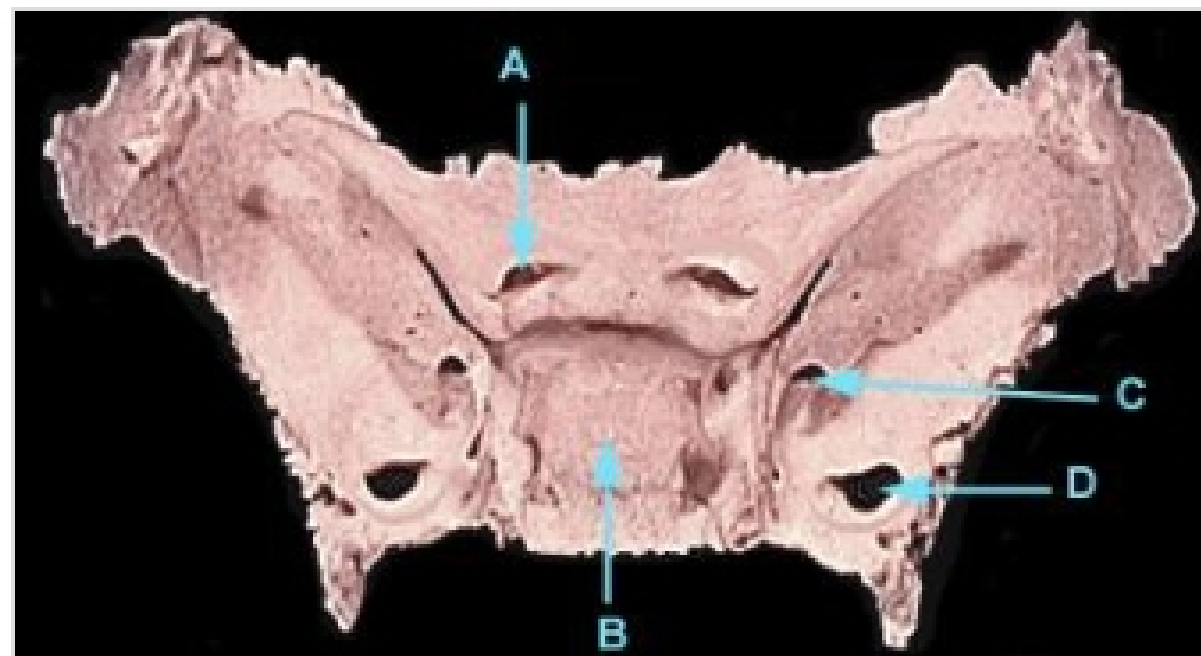


B → the superior orbital fissure



This is a picture of the sphenoid bone; in it you can see:

- A → the optic foramen; transmits optic nerve
- B → the sella turcica; houses pituitary gland
- C → foramen rotundum; transmits CN V₂
- D → foramen ovale; transmits CN V₃



2 of the paranasal air sinuses:

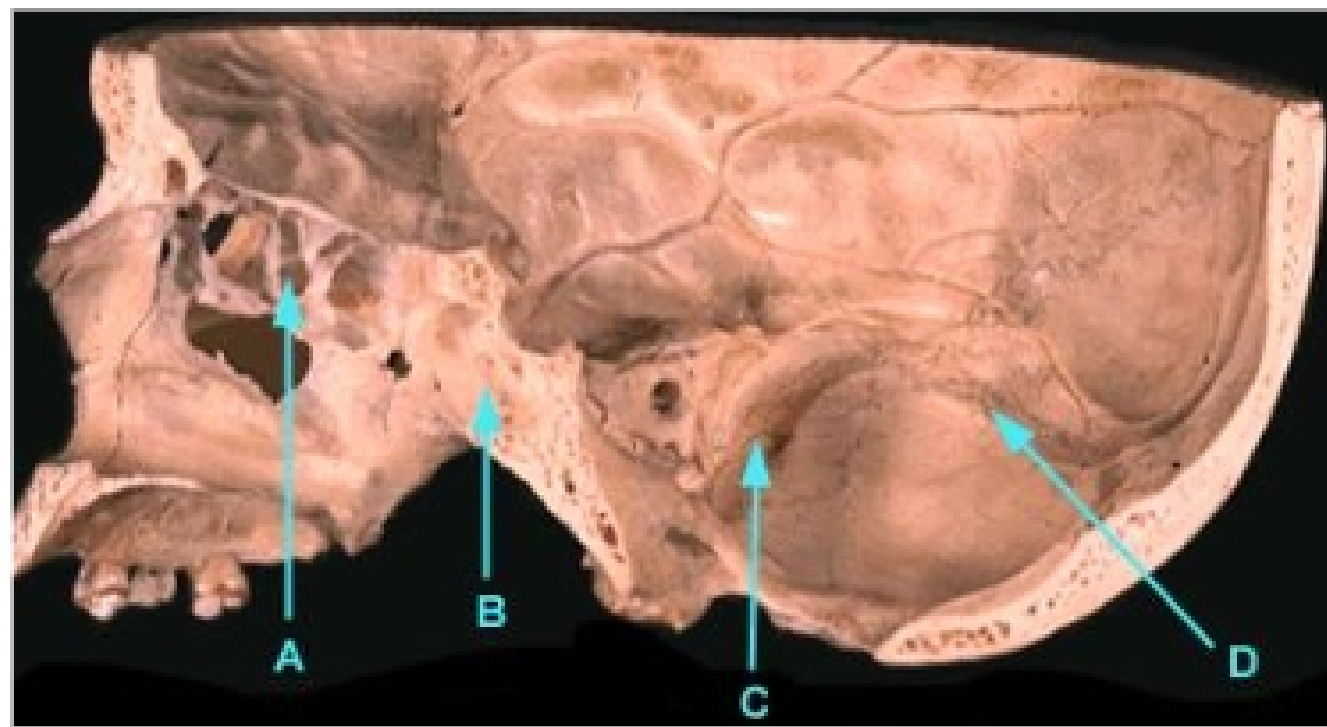
A → ethmoid sinus

B → sphenoid sinus

C → sigmoid sinus &

D → transverse sinus

indicate the indentations made by dural venous sinuses



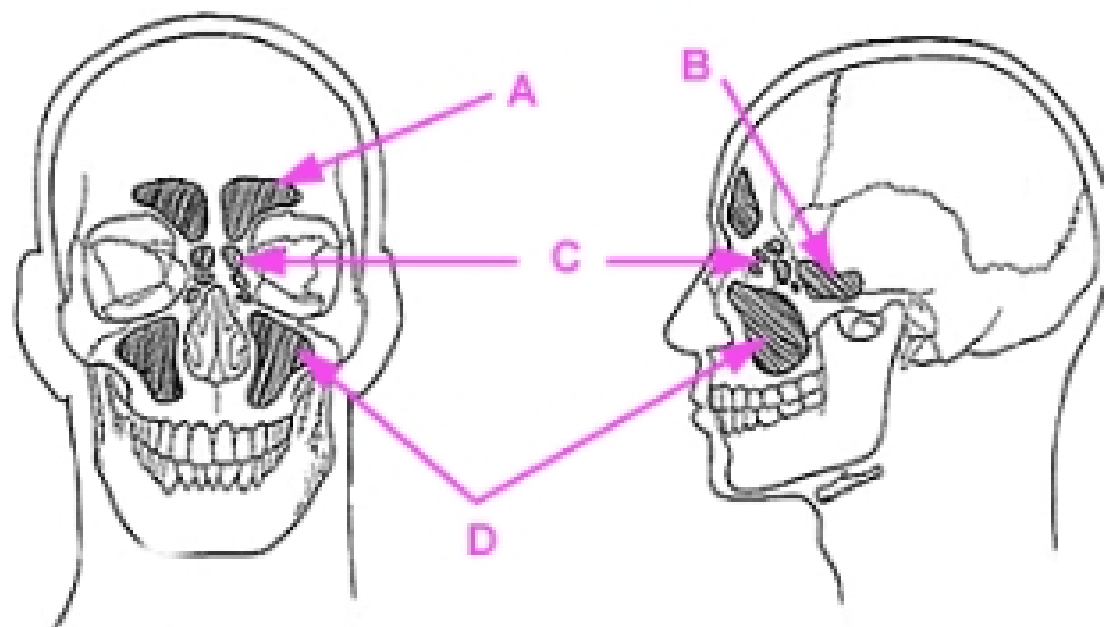
The collective name for the structures indicated

A →, B →, C →, & D →;

the paranasal sinuses;

they are the spaces within bones of the skull, all named for the bone in which they are found.

They help make the skull lighter and are important in resonance of the voice.

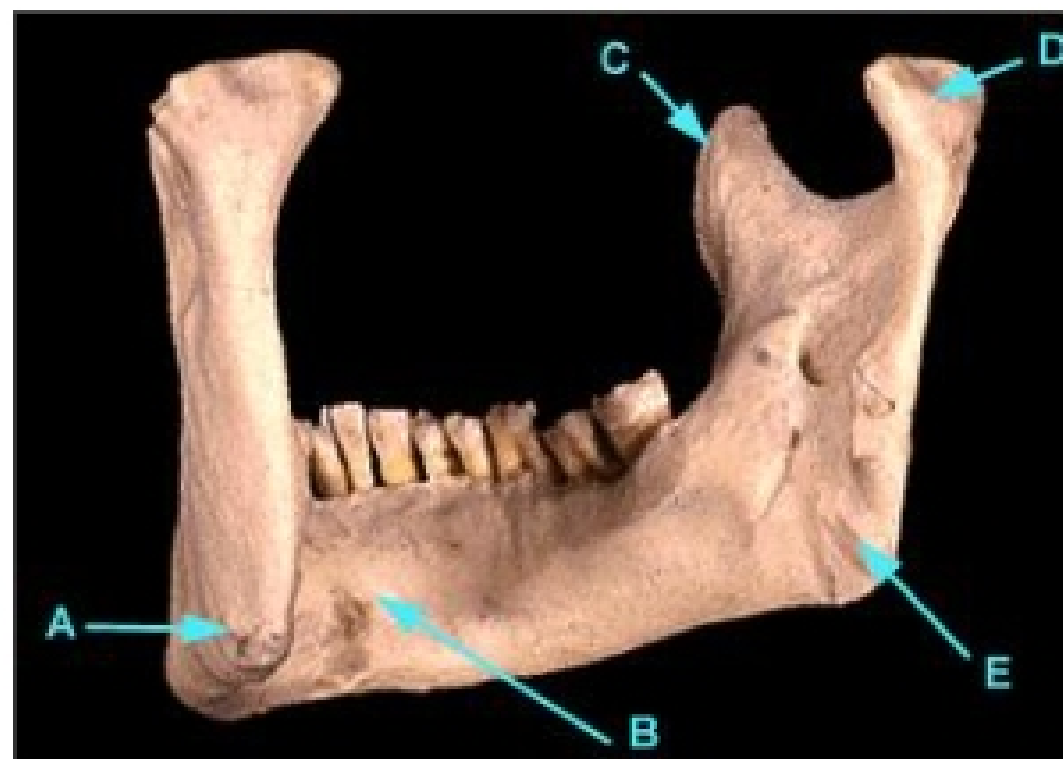


C → ethmoid sinus (air cells)

B → sphenoid sinus

D → the condyle of the mandible;

articulates with the *mandibular fossa* of the *temporal bone*; the joint formed is called the *temporomandibular, or TM joint*



A ⇔ coronal suture

B ⇔ squamosal suture

C → sphenoid bone

D ⇔ sagittal suture

E ⇔ lambdoidal suture

