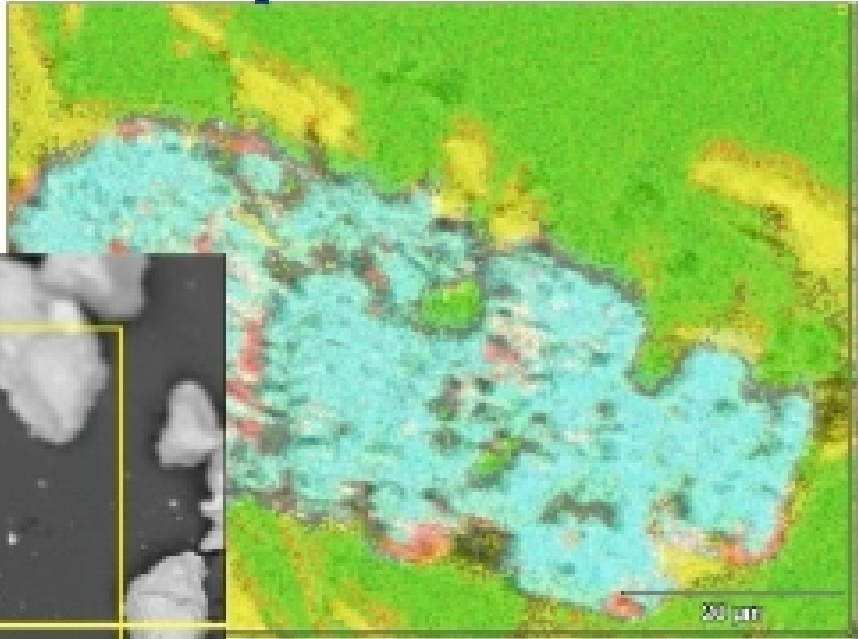
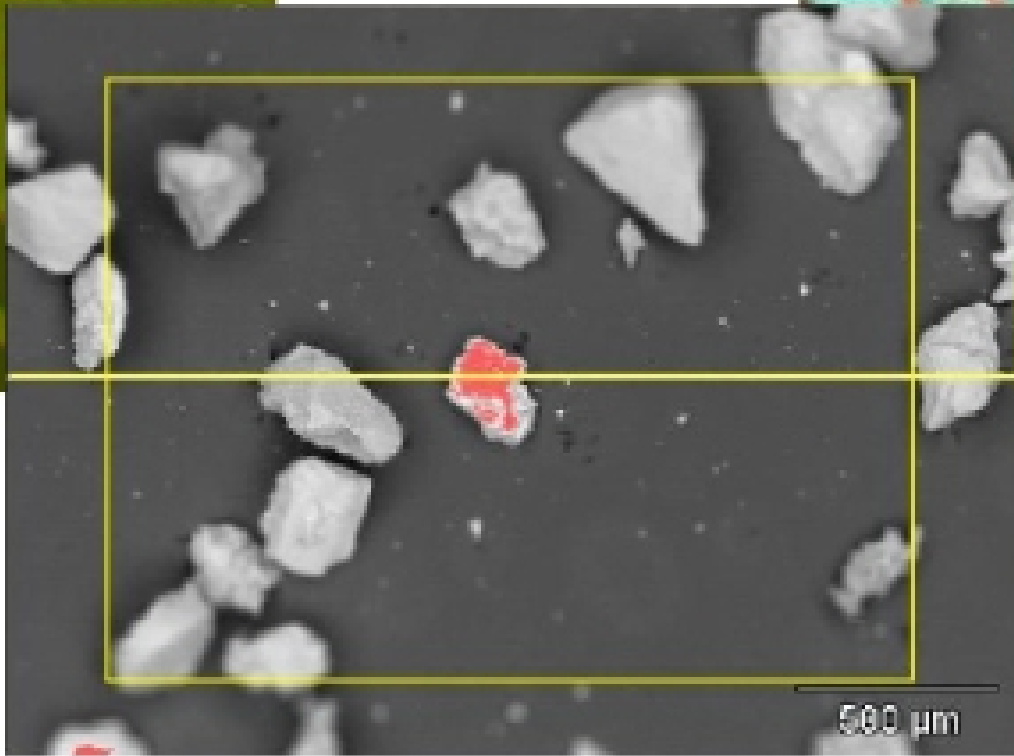
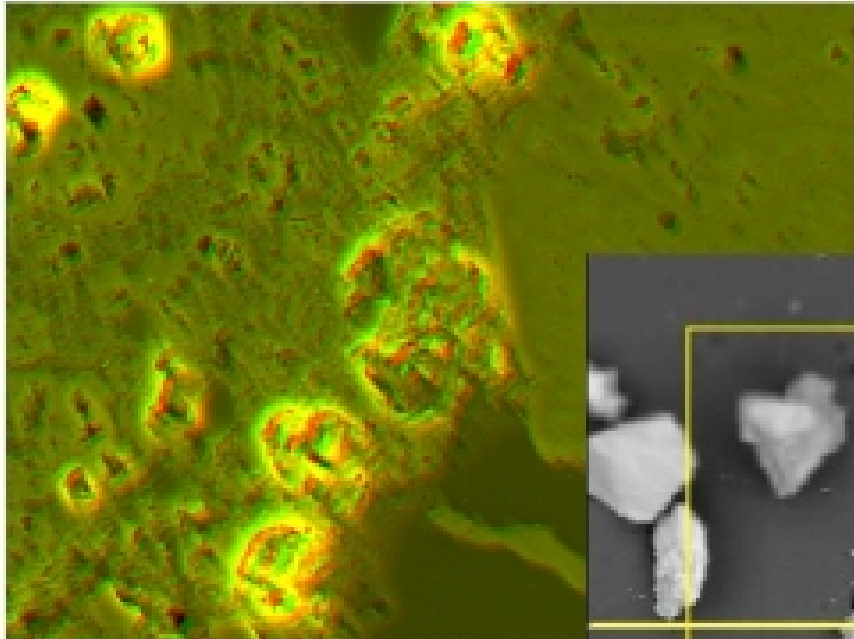




# SEM and EPMA

## Some Advanced Topics





# Beyond the Basics

- Stereo SEM
- EDS of particles: beware!
- TTL Detectors
- X-ray mapping
- Feature Sizing, Chemical Typing
- EBSD
- FIB
- and on and on



# Stereo SEM

Why? Graphical demonstration of 3D shapes of rough or complex objects

How? Very generally .....

1. Acquire two SEM images of the same object at the same magnification but by tilting the stage slightly.
2. Color each image red or green in Photoshop.
3. Then in Photoshop overlay the two images, while wearing red-green stereo glasses, shift them slightly apart until you have the correct 3D effect.
4. Show downstairs in 2nd floor visualization lab for maximum effect...

Exact detailed instructions on wall in room 308