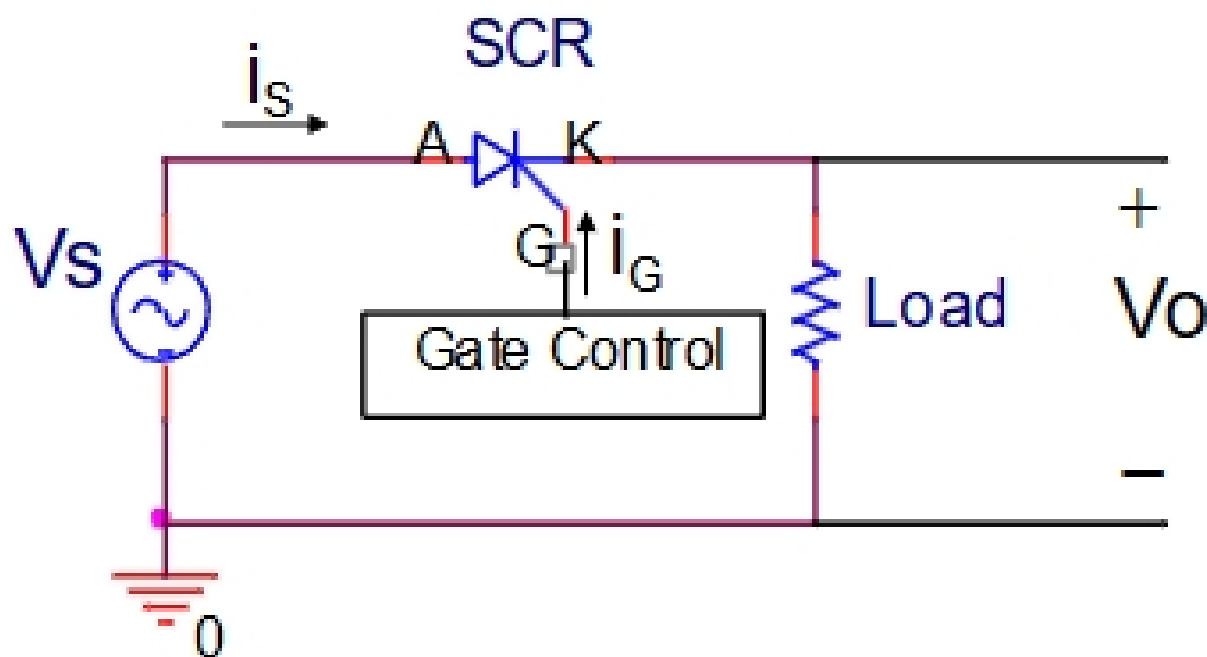


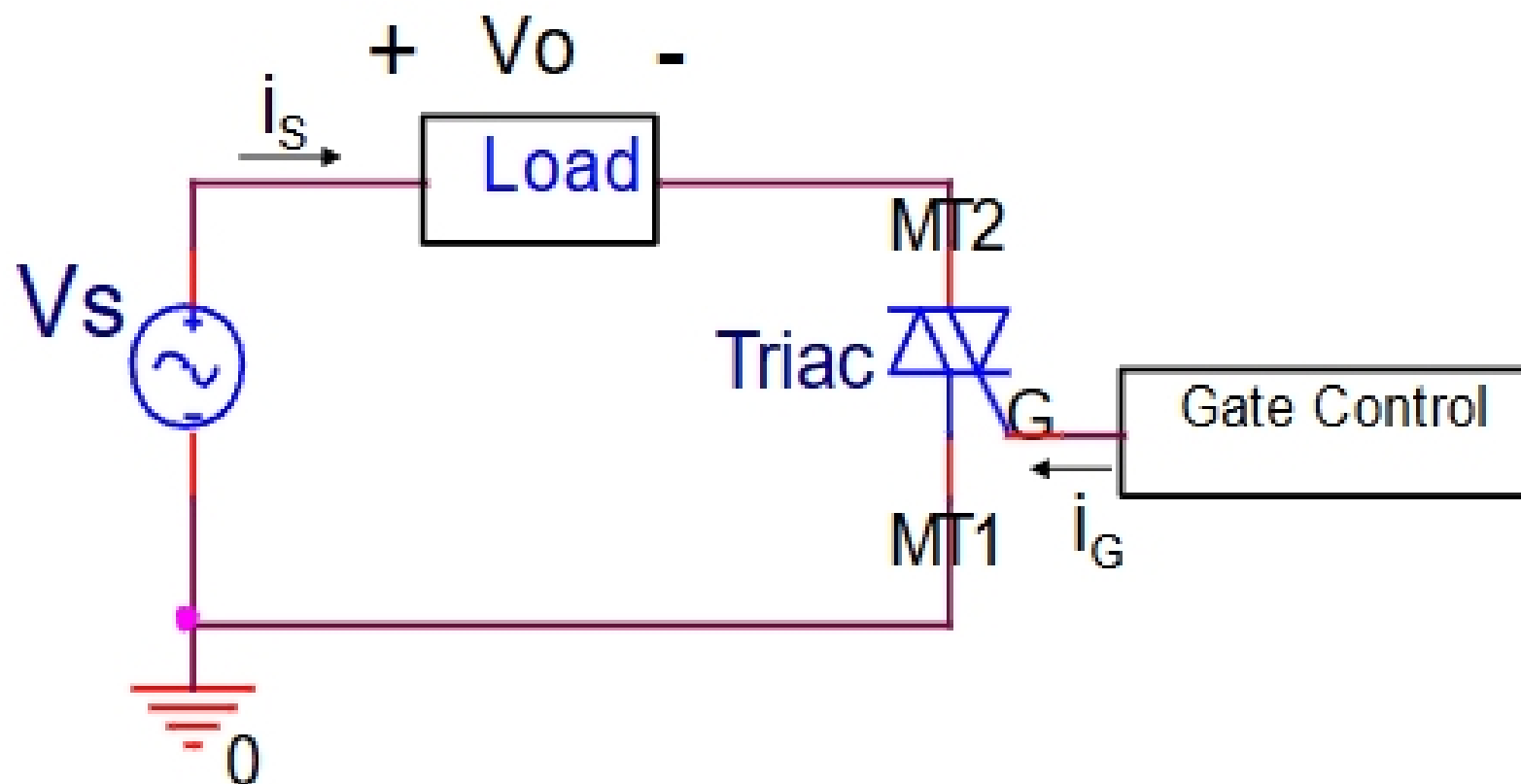
Triacs

- To study Triacs, we 1st need to study Silicon-Controlled Rectifier (SCR).
- SCR behaves like a diode in that it must be forward biased to conduct. However, a current must be applied to its gate for it to **begin to conduct**.

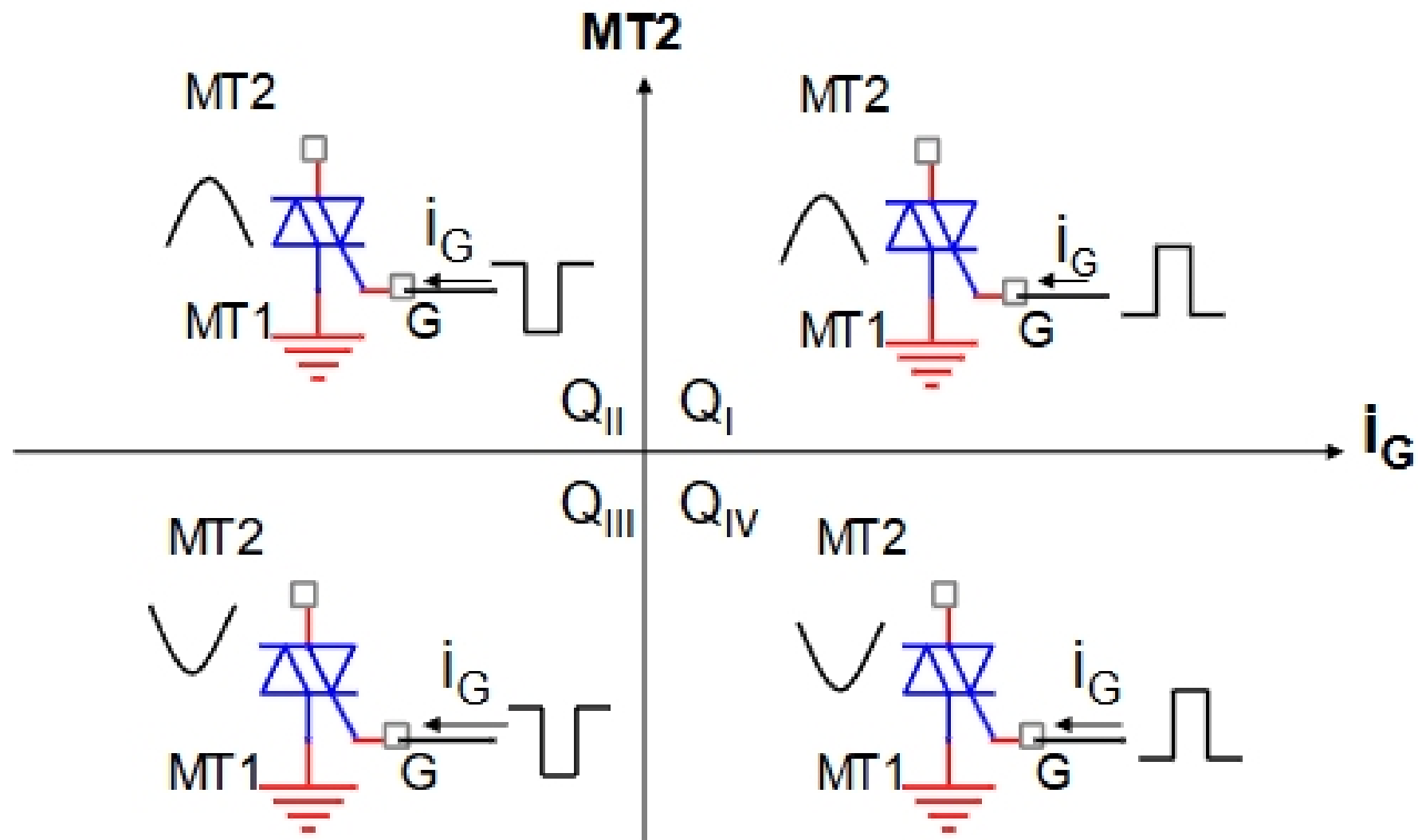


Triacs

- Triacs are bidirectional electronic switches and behave like 2 anti-parallel SCRs.
- It's gate-triggered from the blocking state to the conduction state for either polarity of applied voltage.



Quadrants of Operation



- Quadrants I & III are used for in-phase triggering with ac line.