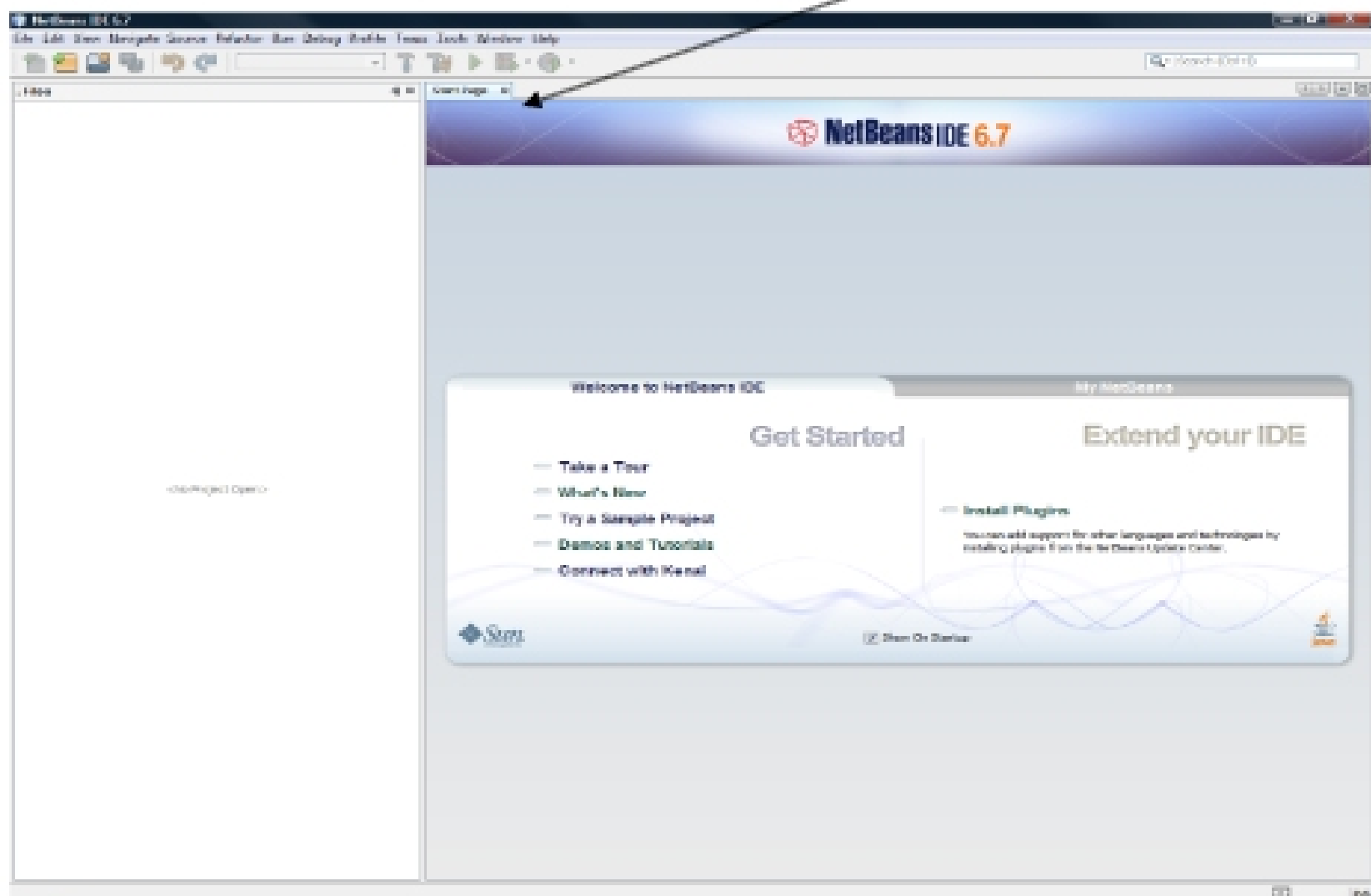


Using NetBeans 6.7 to Create and Run a Java Application

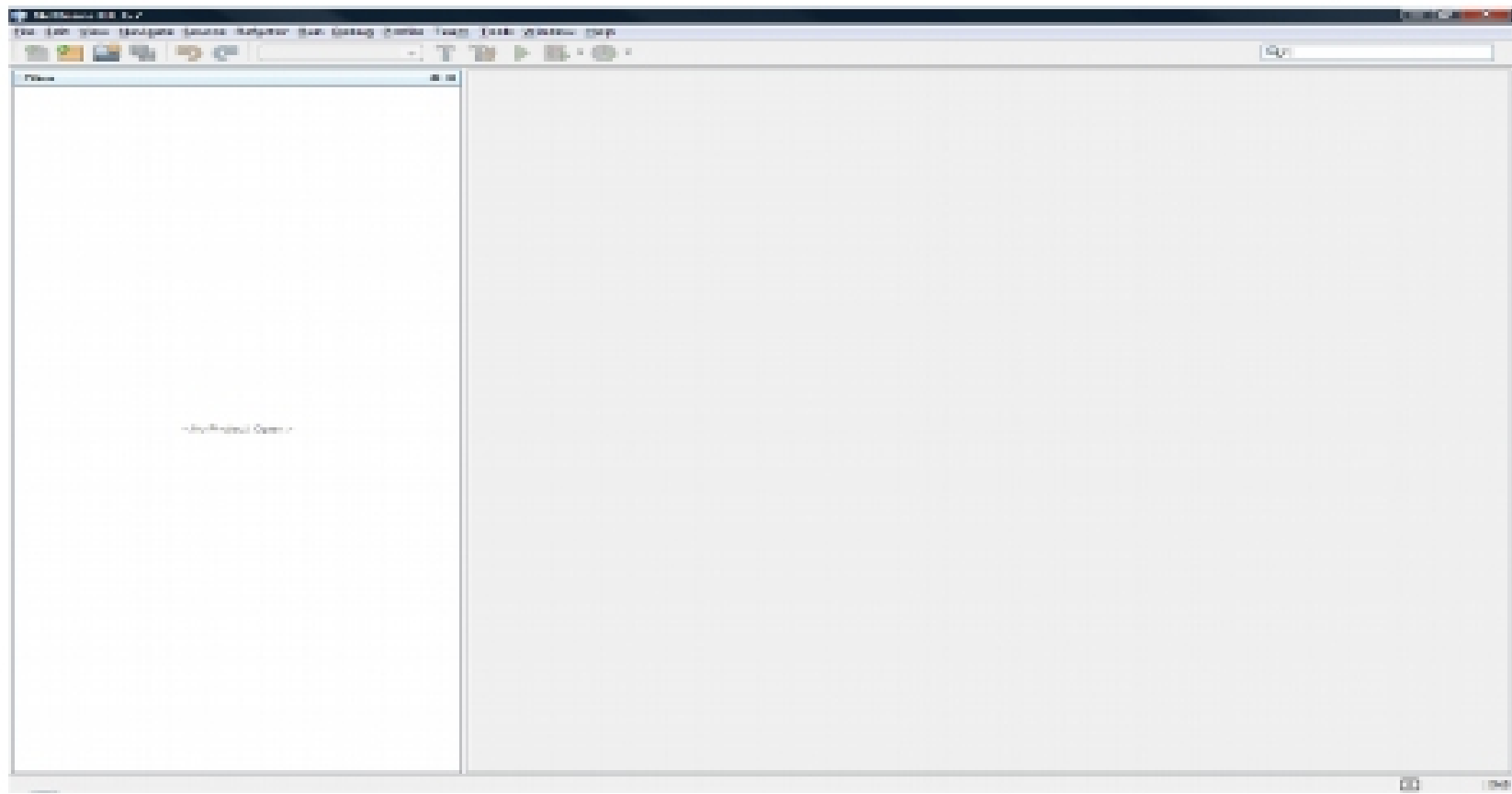
NetBeans is an open source IDE (integrated development environment) available to programmers who want to develop Java projects. Since it is an IDE, the tools needed for editing, compiling, building, debugging, executing, and obtaining online help are all integrated in one graphical user interface. Using these tools effectively can greatly increase your productivity.

Please see the link on my web page to download the latest version of NetBeans6.7 bundled with the latest Java, Java 6. You must download these and install them prior to running this tutorial.

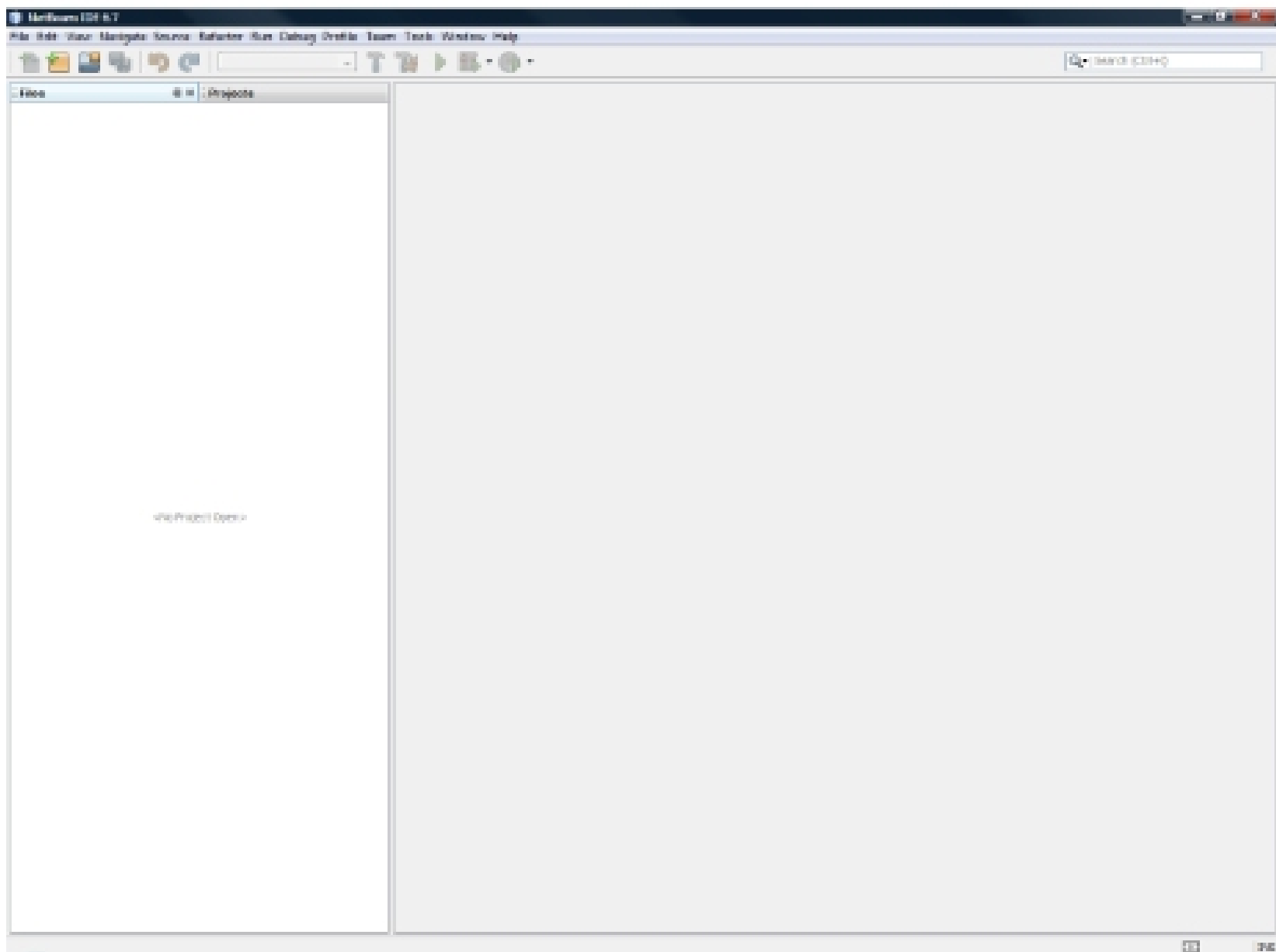
1. **Start NetBeans** by selecting **NetBeans IDE 6.7** from the Start menu or by double-clicking the desktop shortcut (recommended). If you get a registration box option, you may register, if you like (I did). But then you should see a screen that looks like this:
2. There is a lot of useful information on these links. To get rid of the Start Page, click on the X as shown via arrow.



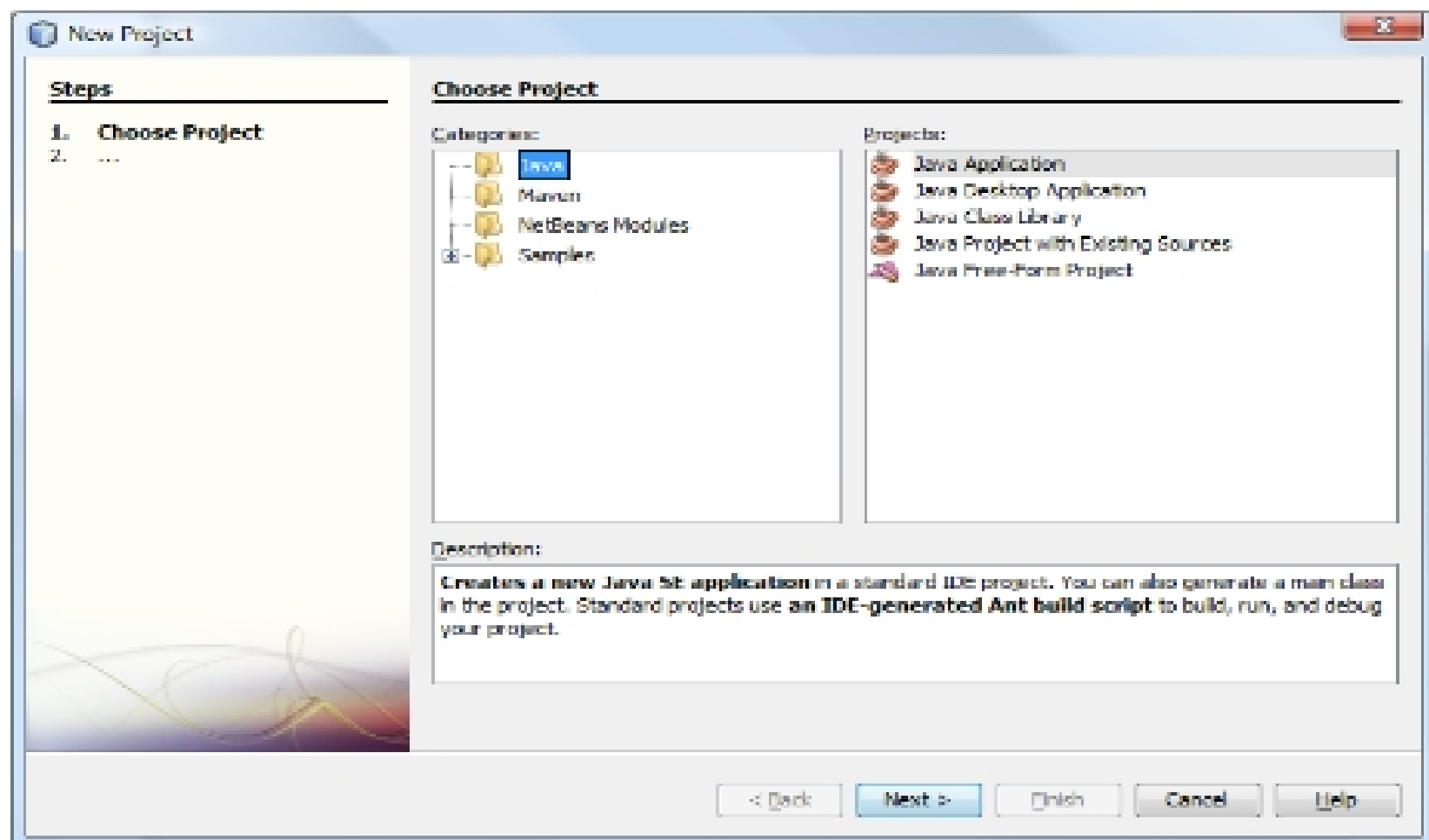
You will see the following screen.



3. You will want at least a files pane and a projects pan. You may select these by clicking on them in the drop down box under **Window** in the menu bar. This will give you a screen that looks like this:



- 1 4. Most activities in NetBeans are considered 'projects,' as all your programming efforts will end up being projects.
5. Under the File menu, select New Project. You will see this New Project Window in the middle of the NetBeans 6.7 Window



2

3

Before starting, you should create a folder on your desktop entitled COP2551. Each lab project this semester will be entitled, **projectyouruserid**, where **i** is the number of the project. For example, your first project would be entitled: project1jsmith. Project1 should be a subfolder within your COP2551 folder. Each project you develop will be located in a different subfolder within COP2551, such as project2jsmith, etc.

- 1 To continue working on a project that was begun earlier (you will see a list as you develop projects) , simple click on the desired project in the Project window and continue development. You must also ensure that the project you are working on is the Main Project, and there can be only one Main project (more later on this).

6. New Application: To create and run a new Java application you must first create a project. In the following exercise we will be creating a project named **projectyouruserid**.