

□ Texture/Pattern/Time

□

□ **Texture** - surface quality; visual indications of a tactile sensation.

Rough, smooth, silky, coarse, lined, patterned.

- **Actual Texture**

- 

- **Visual Texture**

- Illusion of a tactile quality

- Seems to possess surface texture

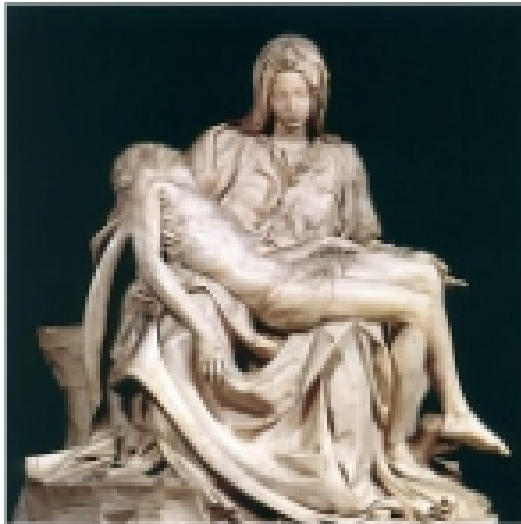
- Inventor of 'frottage' - surface rubbings

- Photogray unites visual/actual textures strip farms across the eroding landscape patterns of light and shadow reveal real surface texture.

□

□

□ **Pieta by Michelangelo**



- 

- Example of Actual Texture

□

□ **Rober Ryman. Long.**

- Impasto: thickly applied paint

- Edges toward sculpture

0

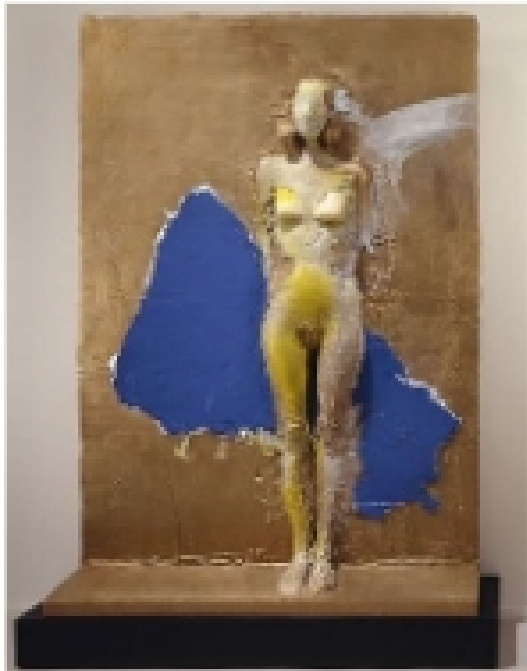


□

□

**Manuel Neri - Mujer Pegada Series No. 2**

•



□

□

**Max Ernst. Forest and Dove.**

- Visual Texture



□

□ **Max Ernst - Europe after the Rain**



- Visual texture

□

□ **William A. Garnett - Erosion and Strip Farms**

- 

□

□ **Patterns**

□

□ **Lindisfarne Gospels**

□

□ **Kente Prestige cloth**

- Patterned textiles/ subtly repetitive designs.

□

□

□ **Miriam Schapiro - Night Shade**