

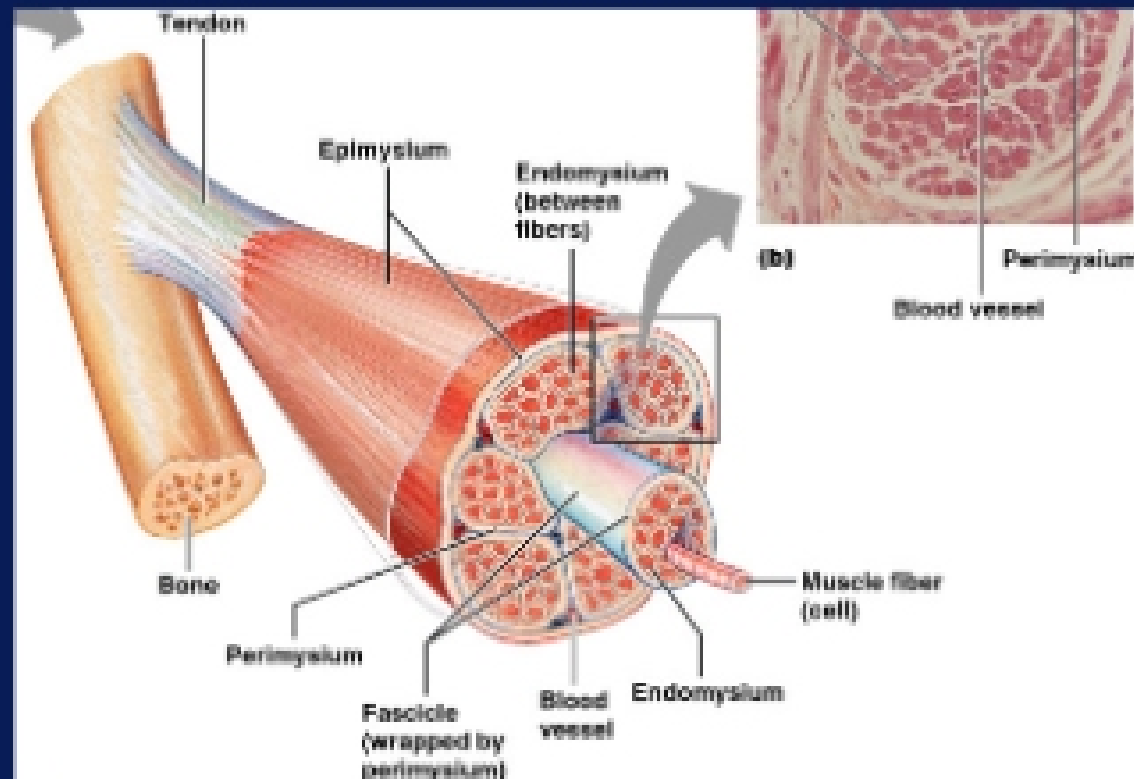
Anatomy of a skeletal muscle

Superficial fascia between hypodermis and muscle
Deep fascia-between individual organs

epimysium: dense, irregular CT outer wrapping

fascicles: bundles of muscle fibers(commonly known as the grain or fibers)

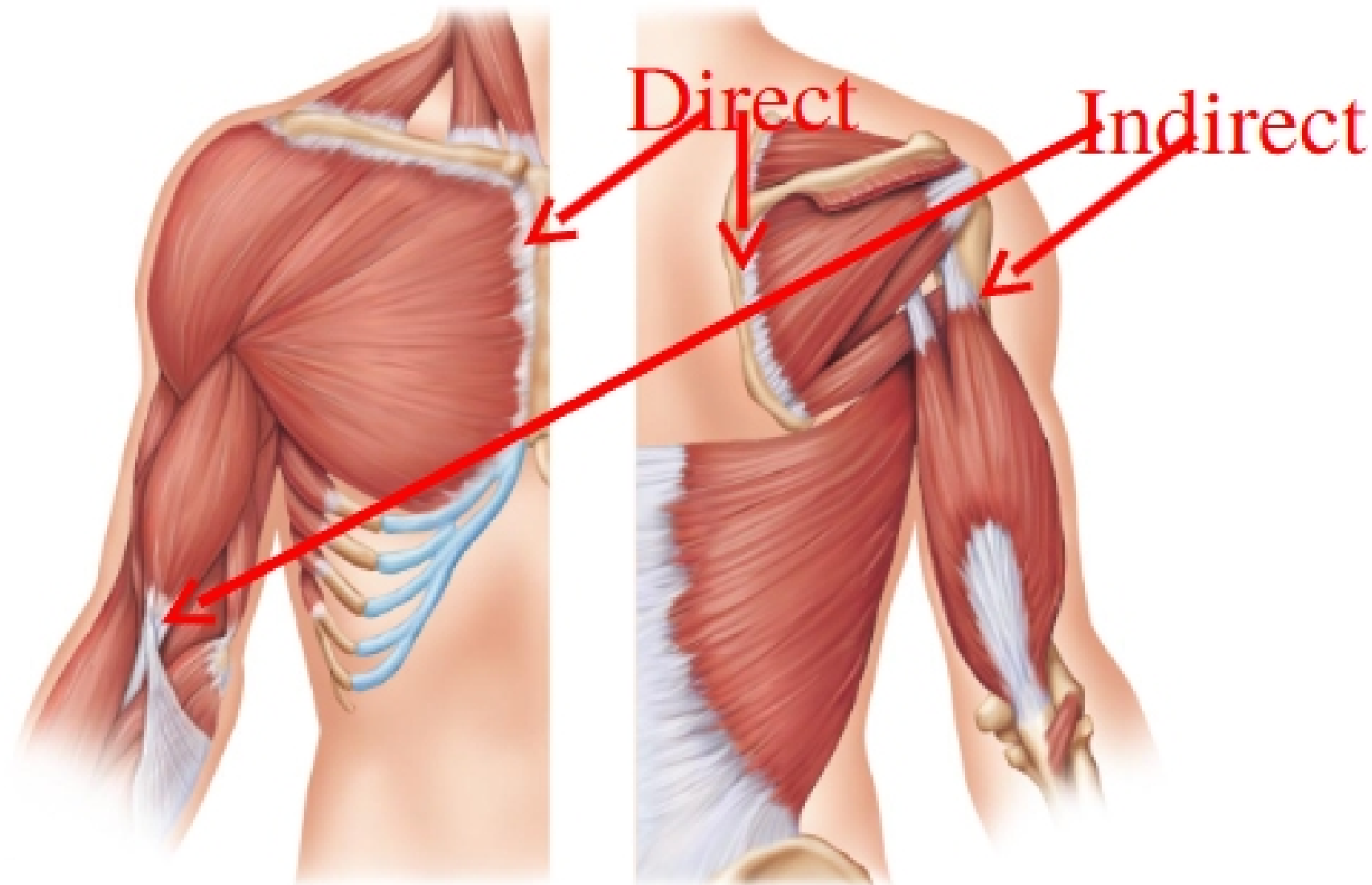
perimysium: fibrous CT surrounds each fascicle



Attachement

direct: epimysium fused to periosteum

indirect: linked to bone by CT attachments



(a)

(b)

© 2013 Pearson Education, Inc.

tendon: ropelike dense CT

aponeurosis: sheet like dense CT

indirect connections are strong and small

