

Line Tree Background Waterfall Background Solid Color Background

Welcome

Core Components



WindowPane



SplitPane



Basic Components

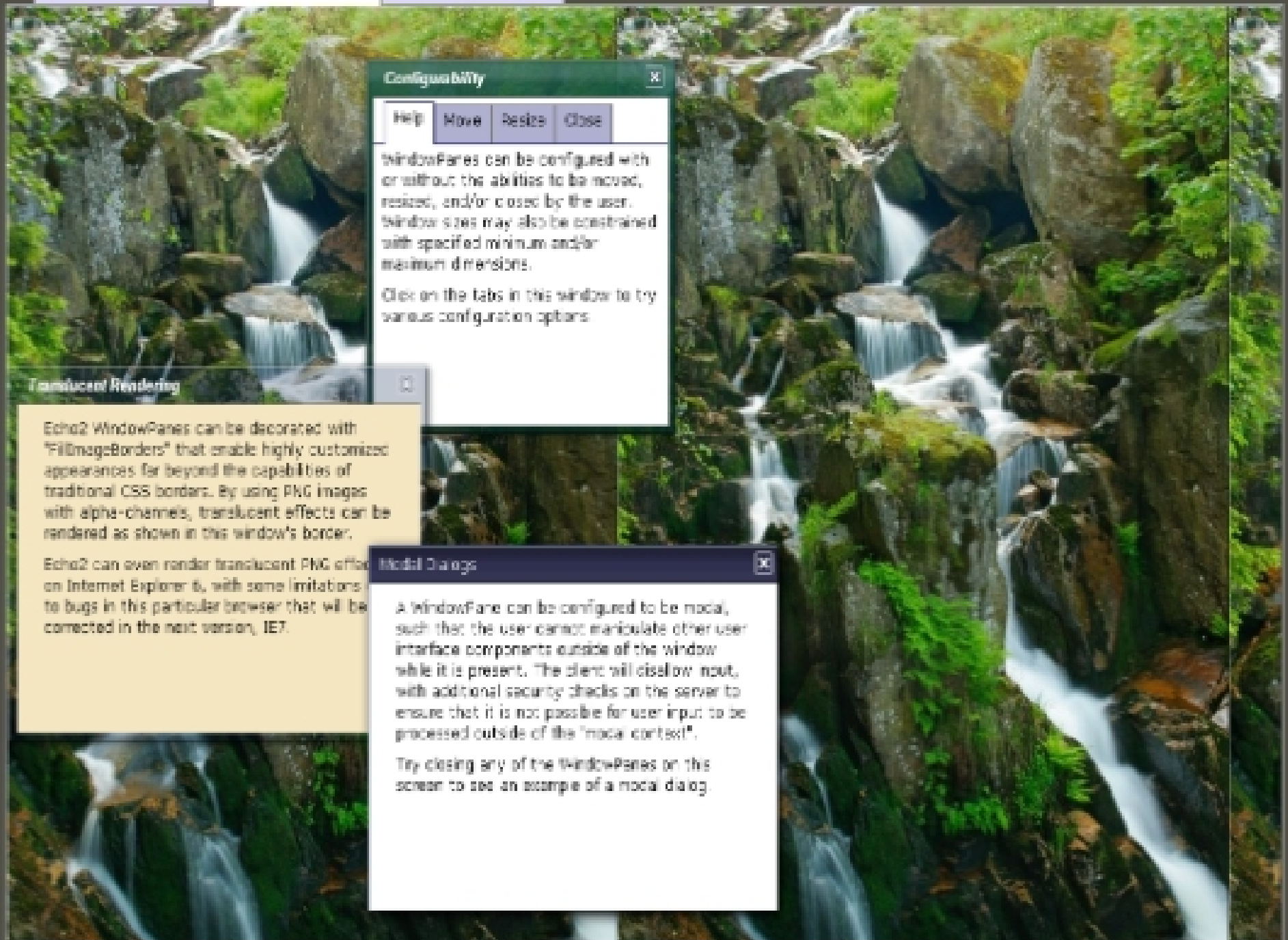


Layout Containers

Technology

Echo2 Extras

Echo2 Chart



Configurability

Help Move Resize Close

WindowPanes can be configured with or without the abilities to be moved, resized, and/or closed by the user. Window sizes may also be constrained with specified minimum and/or maximum dimensions.

Click on the tabs in this window to try various configuration options.

Transparent Rendering

Echo2 WindowPanes can be decorated with "FillImageBorders" that enable highly customized appearances far beyond the capabilities of traditional CSS borders. By using PNG images with alpha-channels, translucent effects can be rendered as shown in this window's border.

Echo2 can even render translucent PNG effects on Internet Explorer 6, with some limitations to bugs in this particular browser that will be corrected in the next version, IE7.

Modal Dialogs

A WindowPane can be configured to be modal, such that the user cannot manipulate other user interface components outside of the window while it is present. The client will disallow input, with additional security checks on the server to ensure that it is not possible for user input to be processed outside of the "modal context".

Try closing any of the WindowPanes on this screen to see an example of a modal dialog.

Introducing Echo

- The main site:
 - <http://echo.nextapp.com/site/>
- Echo2 site (the stable version of Echo):
 - <http://echo.nextapp.com/site/echo2>
- Curious about a demo of Echo2?
 - <http://demo.nextapp.com/Demo/app>

Introducing Echo

- platform for building web-based applications (AJAX)
 - actually an acronym for "Asynchronous JavaScript and XML"
 - represents the combined use of XHTML, CSS, DOM Manipulation, XML/XSLT, JavaScript, and XMLHttpRequest
 - entirely Java-based API for application development
- open-source software
 - licensed under Mozilla Public License
 - <http://echo.nextapp.com/site/license/mpl>