

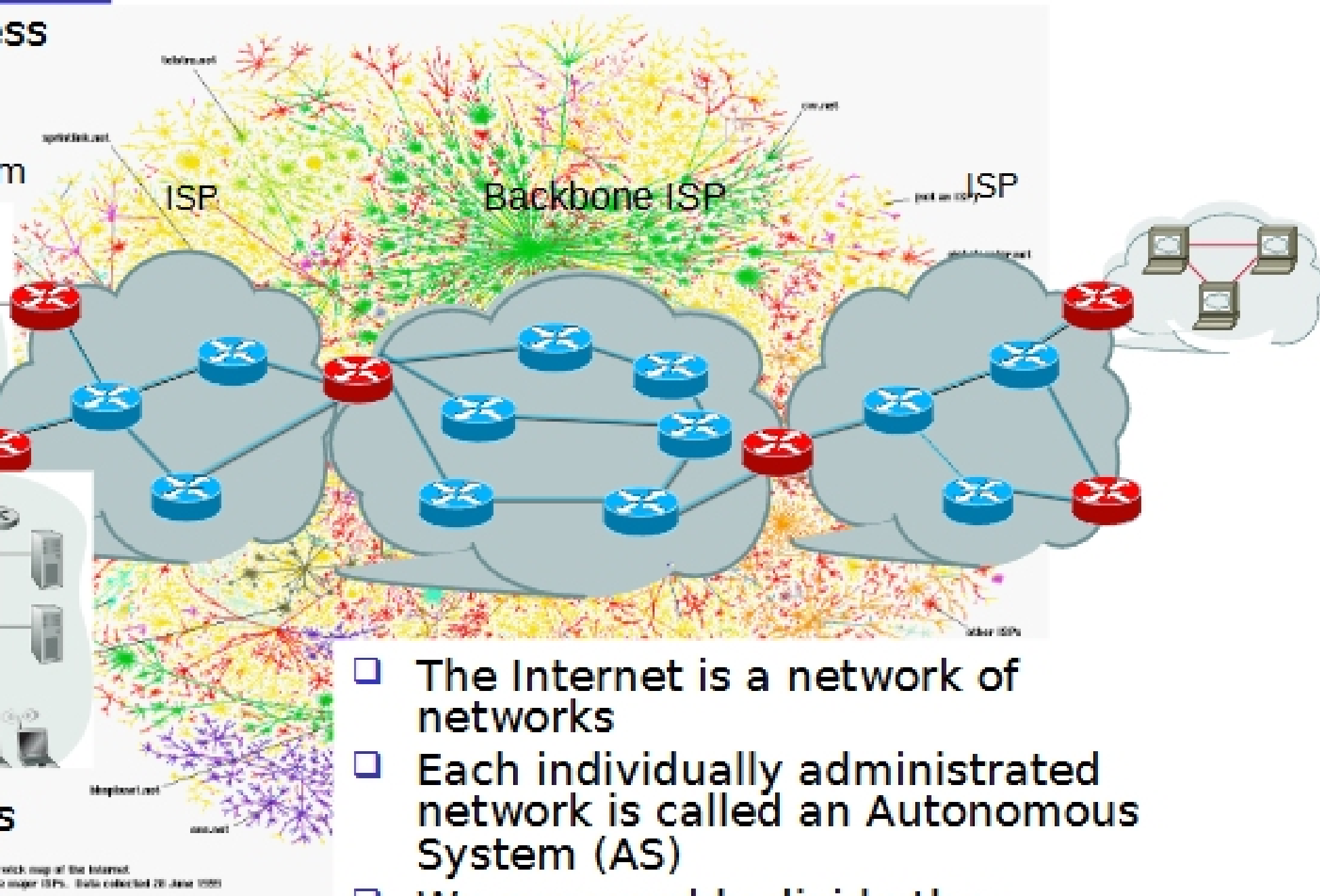
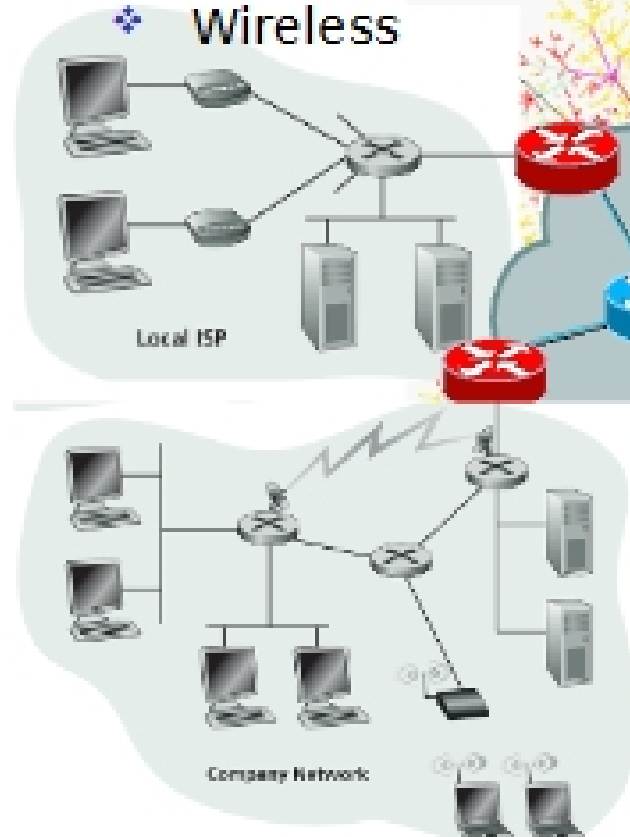
# Lec 2: Internet Connectivity: Packet Switching

ECE5650

# Recap: Internet Physical Structure

## Residential access

- ❖ Modem
- ❖ DSL
- ❖ Cable modem
- ❖ Wireless



## Campus access

- ❖ Ethernet
- ❖ FDDI
- ❖ Wireless

- ❑ The Internet is a network of networks
- ❑ Each individually administrated network is called an Autonomous System (AS)
- ❑ We can roughly divide the networks into access networks and transit networks

# Recap: Layered protocol stack

- **application:** supporting network applications
  - ❖ FTP, SMTP, HTTP
- **transport:** process-process data transfer
  - ❖ TCP, UDP
- **network:** host-host data transfer
  - ❖ IP
- **link:** data transfer between neighboring network elements
  - ❖ PPP, Ethernet
- **physical:** bits “on the wire”

