

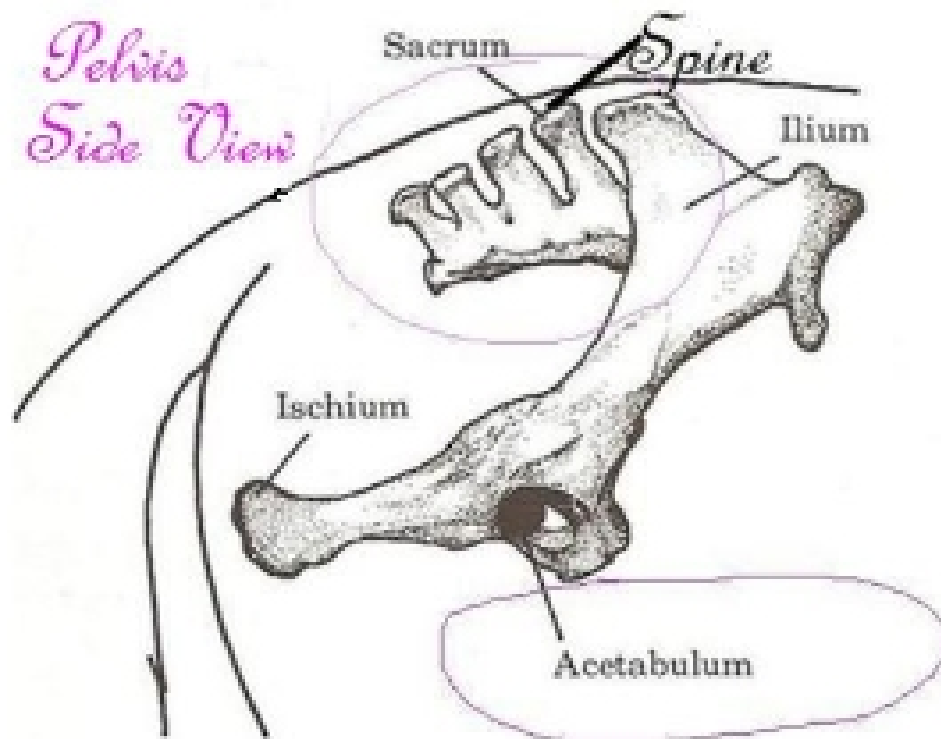
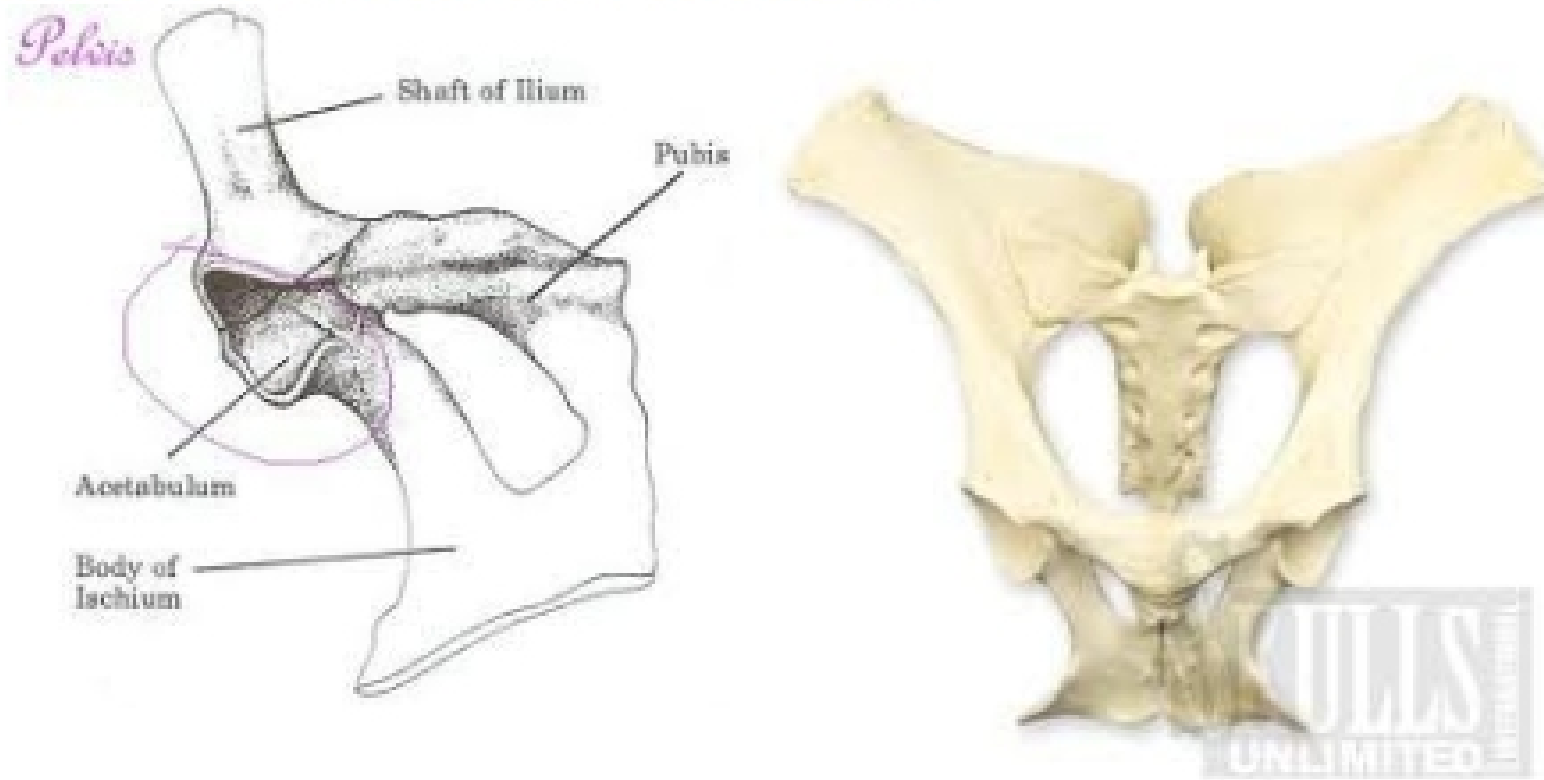
SKELETON – PART II
ADVS 2190 – 2013

APPENDICULAR SKELETON

- ◆ Fore Limb
- ◆ Scapula is unique
 - Does not connect to any other bone, cartilage, tendon, or ligaments at the top
 - Supported by thoracic sling



AXIAL SKELETON- PELVIC GIRDLE

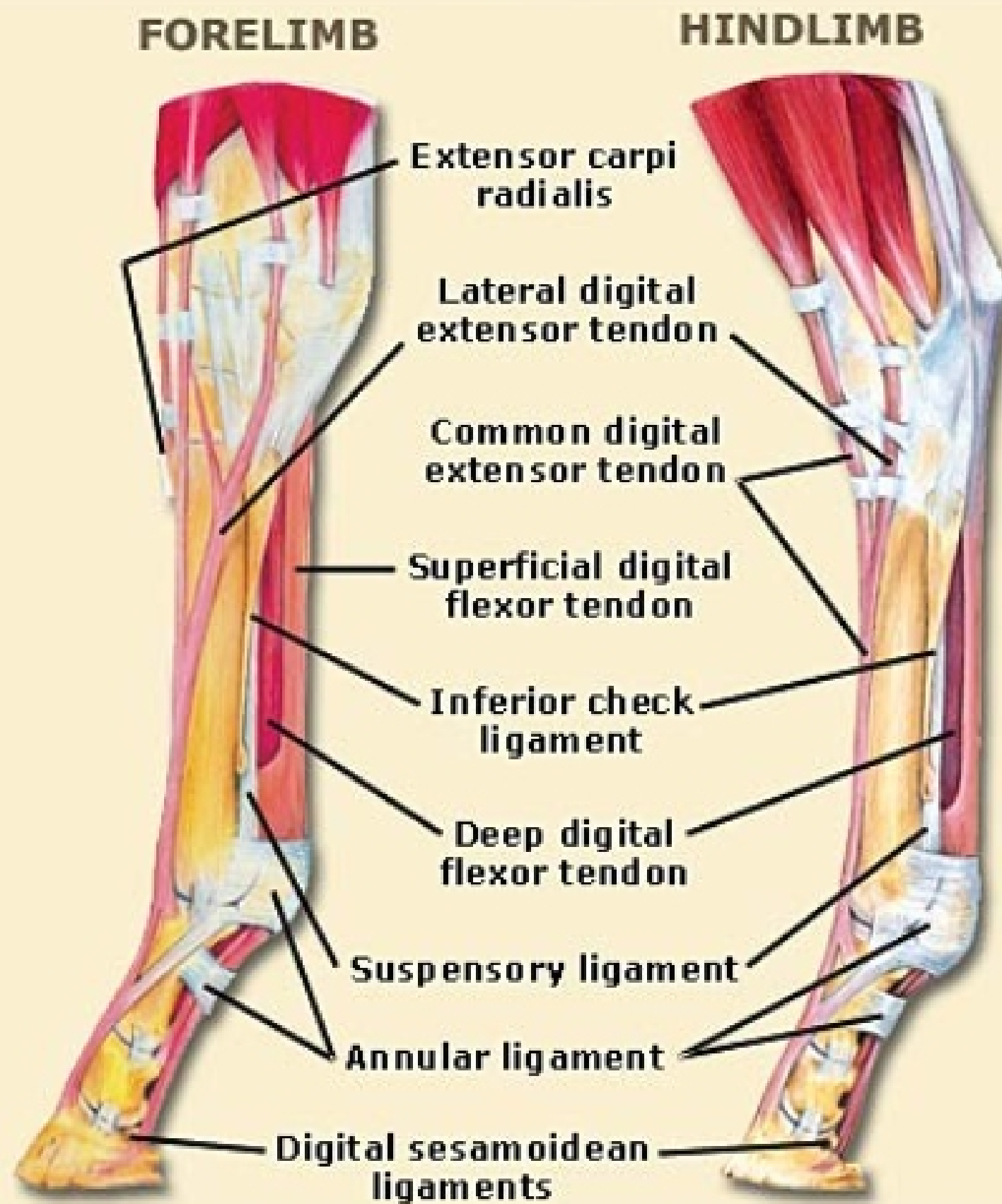


SKELETAL MOVEMENT

- ◆ How do the bones move ?
- ◆ Tendons
 - Muscle to Bone
 - Movement

- ◆ How do bones stay in position ?
- ◆ Ligaments
 - Bone to Bone
 - Structural Support

Tendons and Ligaments



© DR. ROBIN PETERSON/THE HORSE

TERMINOLOGY

◆ Flexor vs. Extender

- Flexor- pulls leg up off the ground "Flexing"
- Extender- pulls leg forward