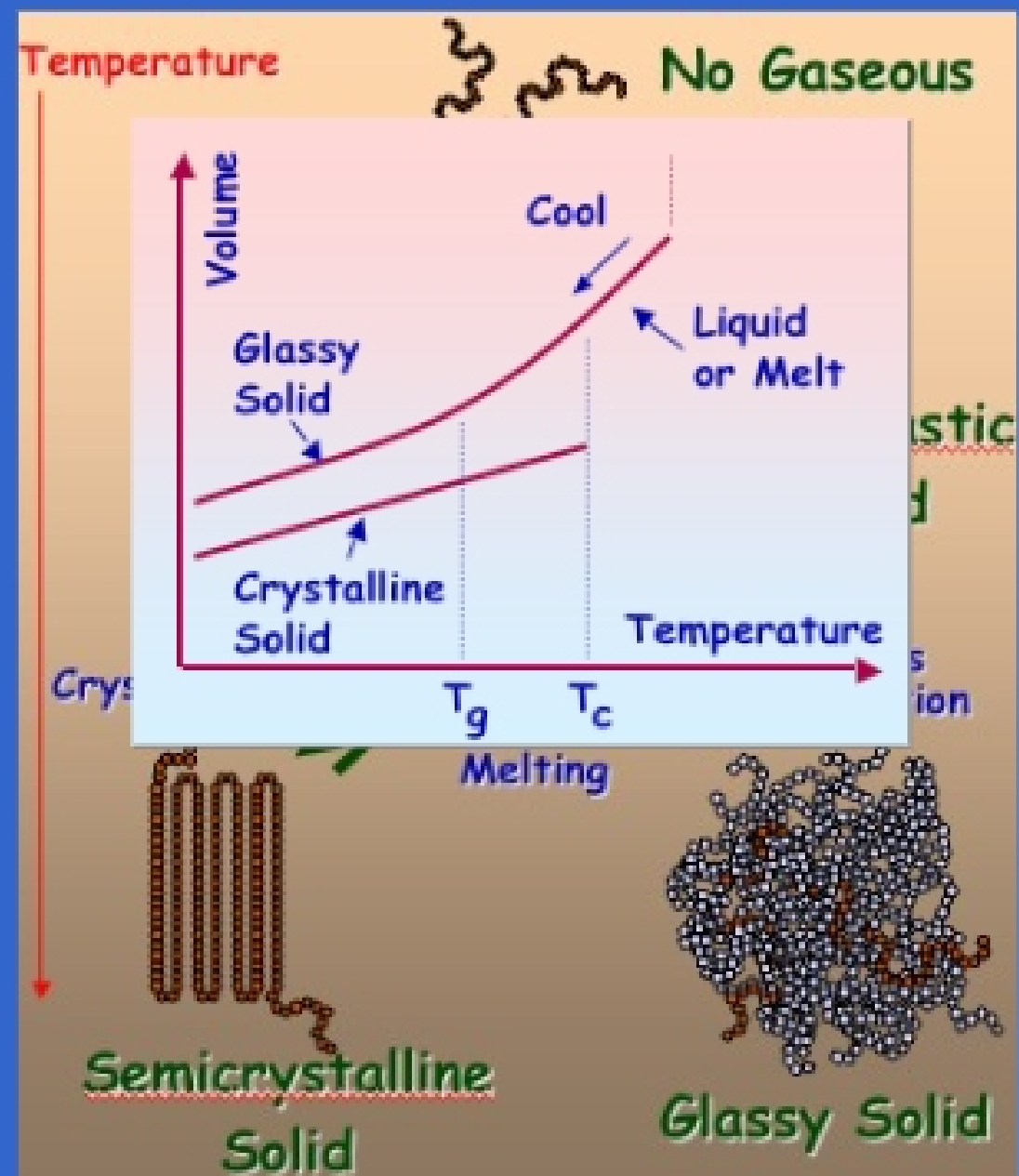
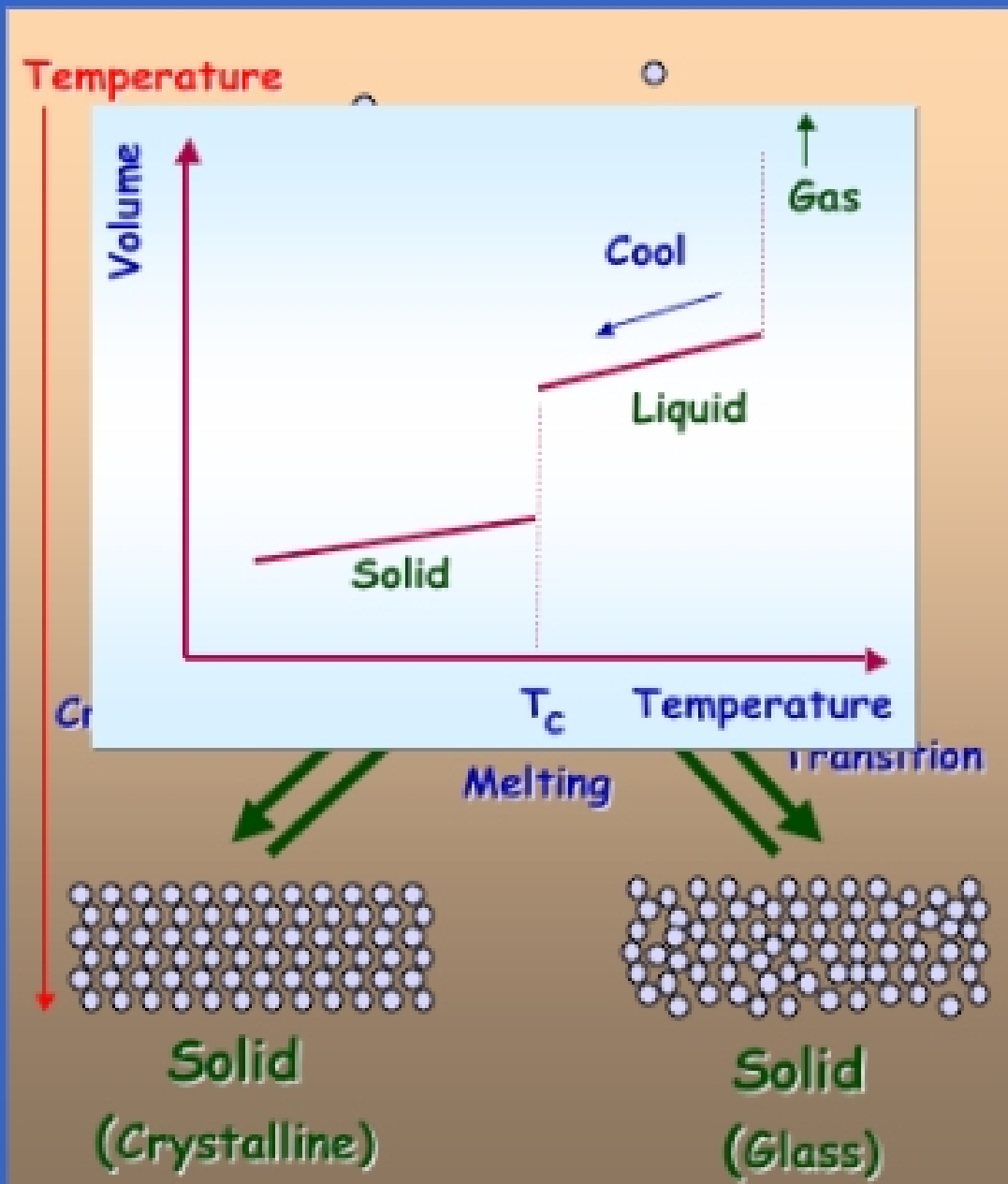


While knowledge is most readily assimilated by the prepared mind, that same mind can be refractory to penetration if it is "prepared" to believe that it cannot be taught.

— *Prof. Leigh Palmer, in a letter to Feynman*

Polymers are different



Polymers are different

- Normal crystalline materials
 - *Either crystalline (~100 %, neglecting defects) or amorphous at a particular temperature*
 - *Melt at a sharp, well-defined temperature*
- Crystallizable polymers
 - *Never 100% Crystalline*
 - *Melt over a Range of Temperatures*