

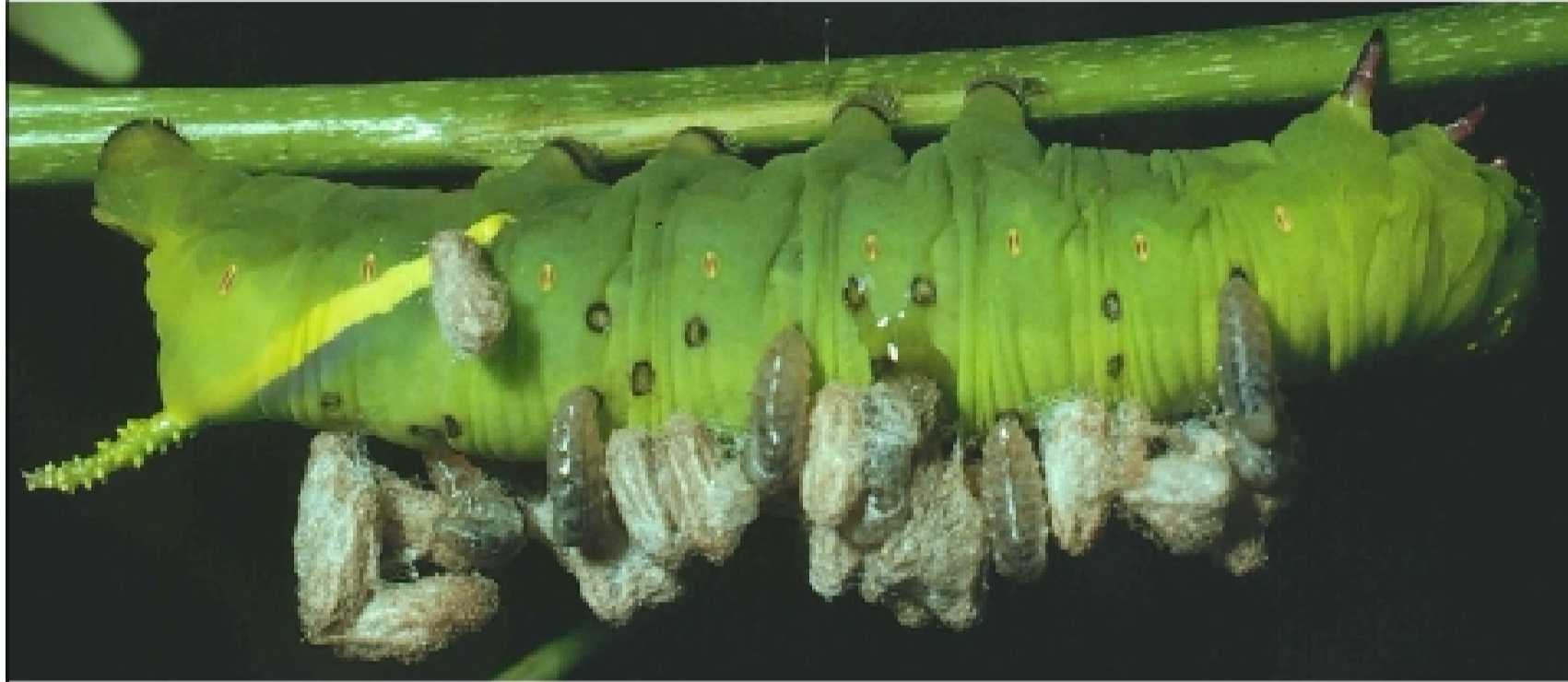


Most predators are insects

Parasitoids lay eggs in their hosts, and the larvae consume the host from the inside, eventually killing it (wasp laying egg in aphid)



Parasitoids lay eggs in their hosts, and the larvae consume the host from the inside, eventually killing it (flies emerging from caterpillar)



Questions concerning the role of predation in population ecology and evolution:

A. Do predators limit prey populations below their carrying capacity? (and does this in turn affect competitive outcomes?)

