

Learning Team Prep

CIS/319

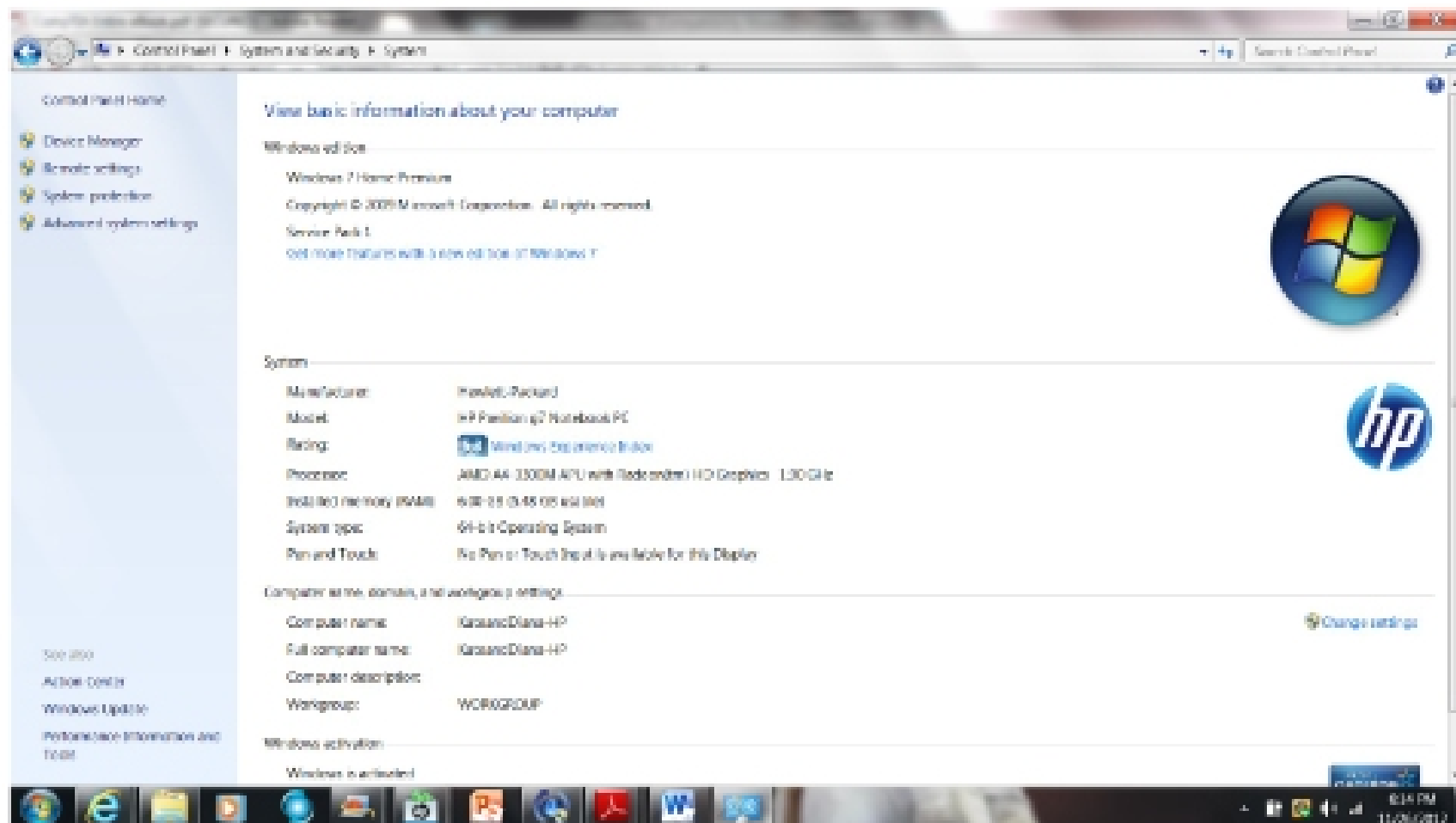
## Learning Team Prep

- Convert Between Binary and Other Numbering Systems
- <http://www.wikihow.com/Convert-from-Binary-to-Decimal>
- **Choose 2 binary numbers of your choice and convert to decimals.**

I did this off the directions in the reading. Pretty simple and took five minutes. The only thing I am unsure about is why you can do it using a calculator. I know it has to do with writing codes, but why does this function even exist on a calculator.

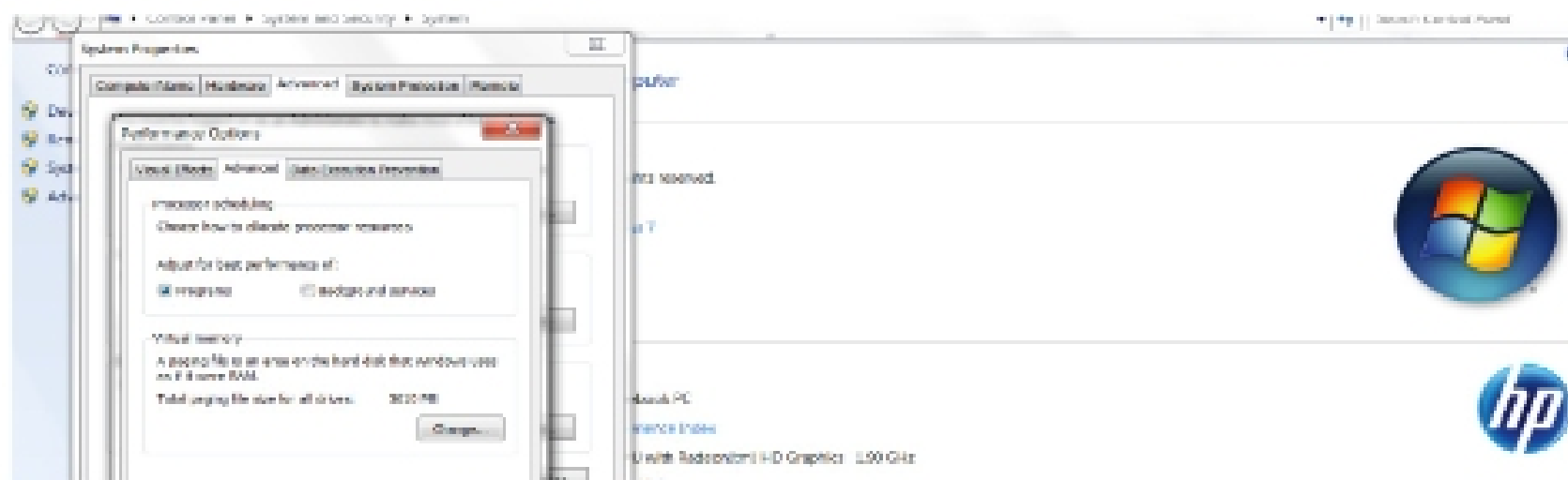
- **Assessing Your Computer's RAM and Virtual Memory (how much memory do you have?)**

I did this also off the directions in the reading:



I have 6.00 GB.

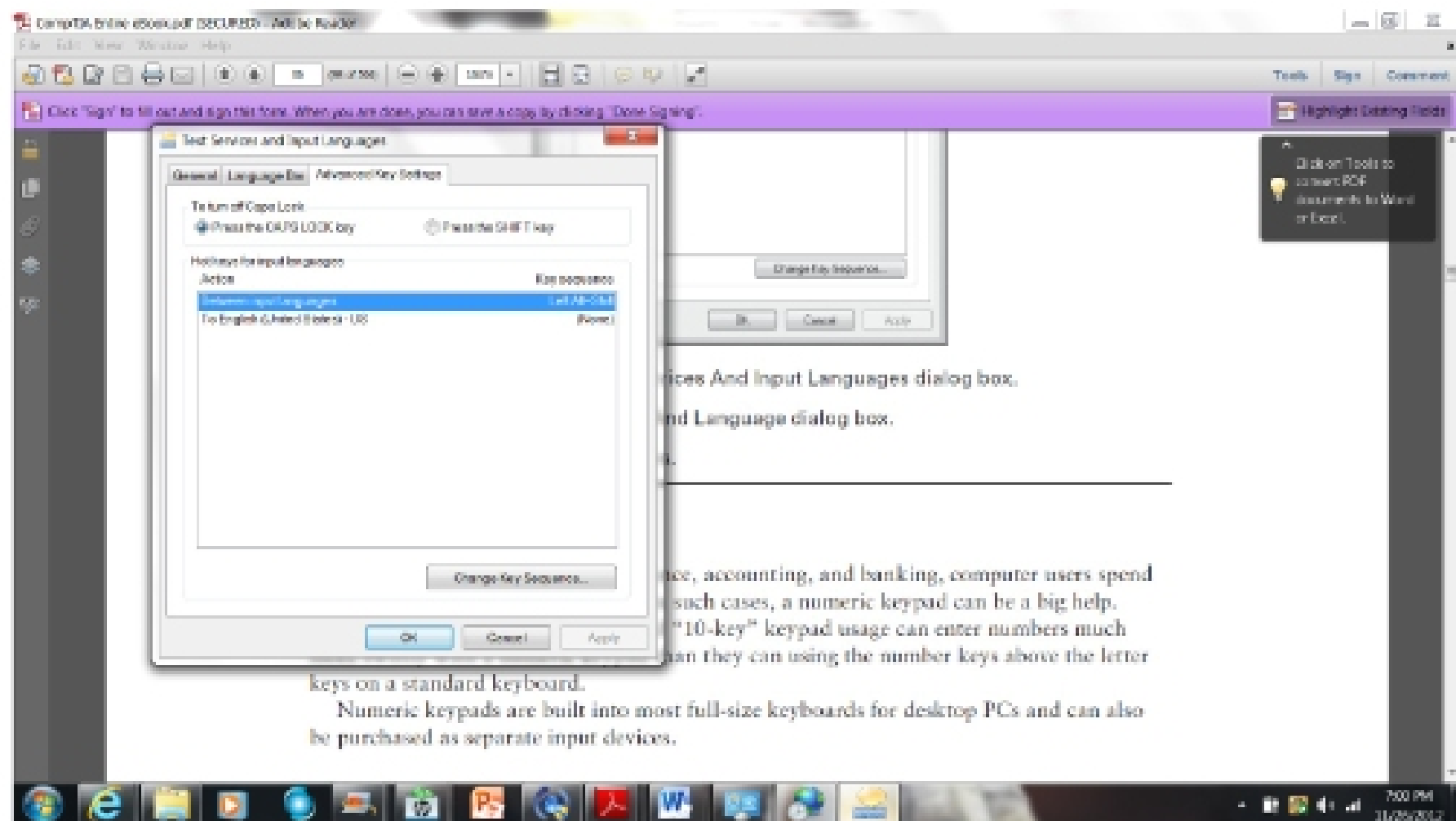
Then I did the Virtual Memory portion:



I have 5610 MB.

- Explore Keyboard Layout and Region Settings (comment on your keyboard type)

I looked at the keyboard layout. I have to be honest here – I was a little lost at what I was looking at. I could get to the properties, but because I have a laptop with a built in keyboard, I don't understand this functionality:



- Explore Mouse Functionality (what do you use)

I use a touchpad on the laptop.

- Get Hard Disk Information (look at your system hardware settings.)

I have a 446 GB Hard Drive (or C Drive):

