

**Remote Access to Cadence at GWU for ECE 126 / 128 / 213 / 214 / 216 / 218**  
**For Windows**  
01/2012 – Thomas Farmer

To access cadence / synopsis tools remotely (from home or on campus), two tools are required:

- a) SSH client software (we use PUTTY in this tutorial)
- b) VNC client software

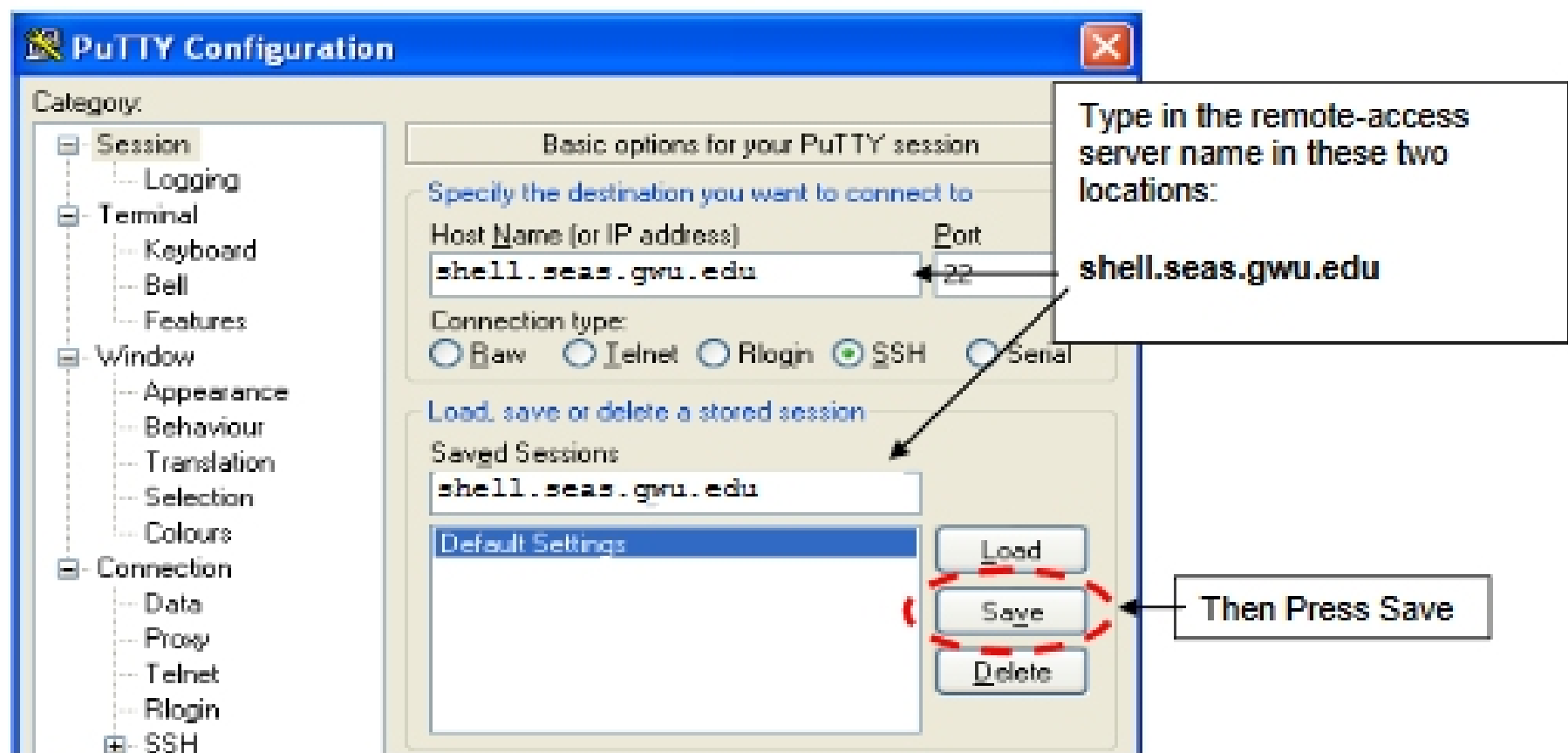
1) Download an SSH client, we recommend putty:

<http://www.chiark.greenend.org.uk/~sgtatham/putty/download.html>  
(download putty.exe, save to your desktop)

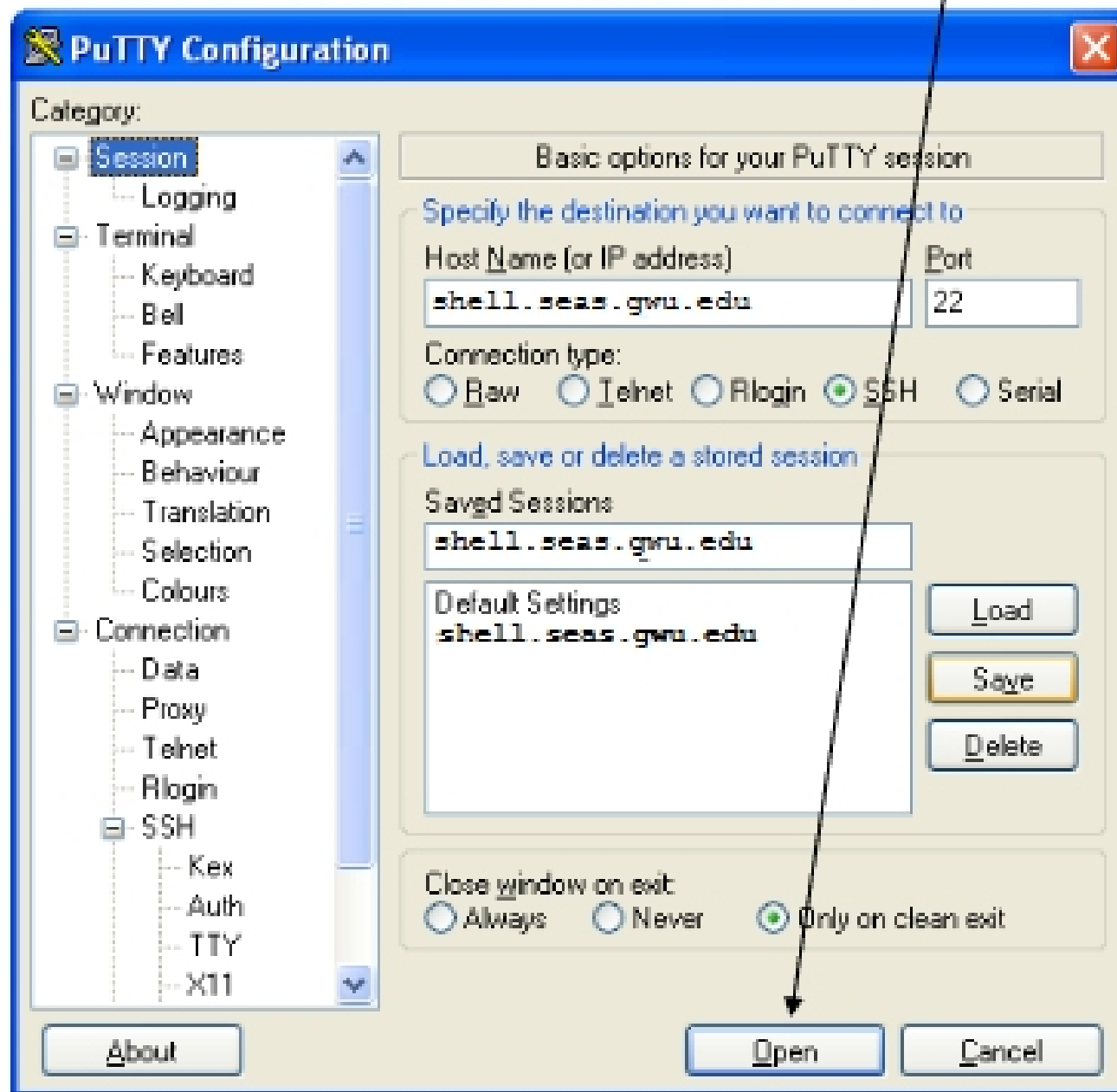
If not available at the link above, click here to download the version stored at GW on10/08:  
<http://www.seas.gwu.edu/~vlsi/ece126/software/putty/putty.exe>  
(save to your desktop)

2) Open and configure Putty:

- Putty does not need to be installed, double click on the putty.exe icon on your desktop
- Fill in the GWU server name as follows:



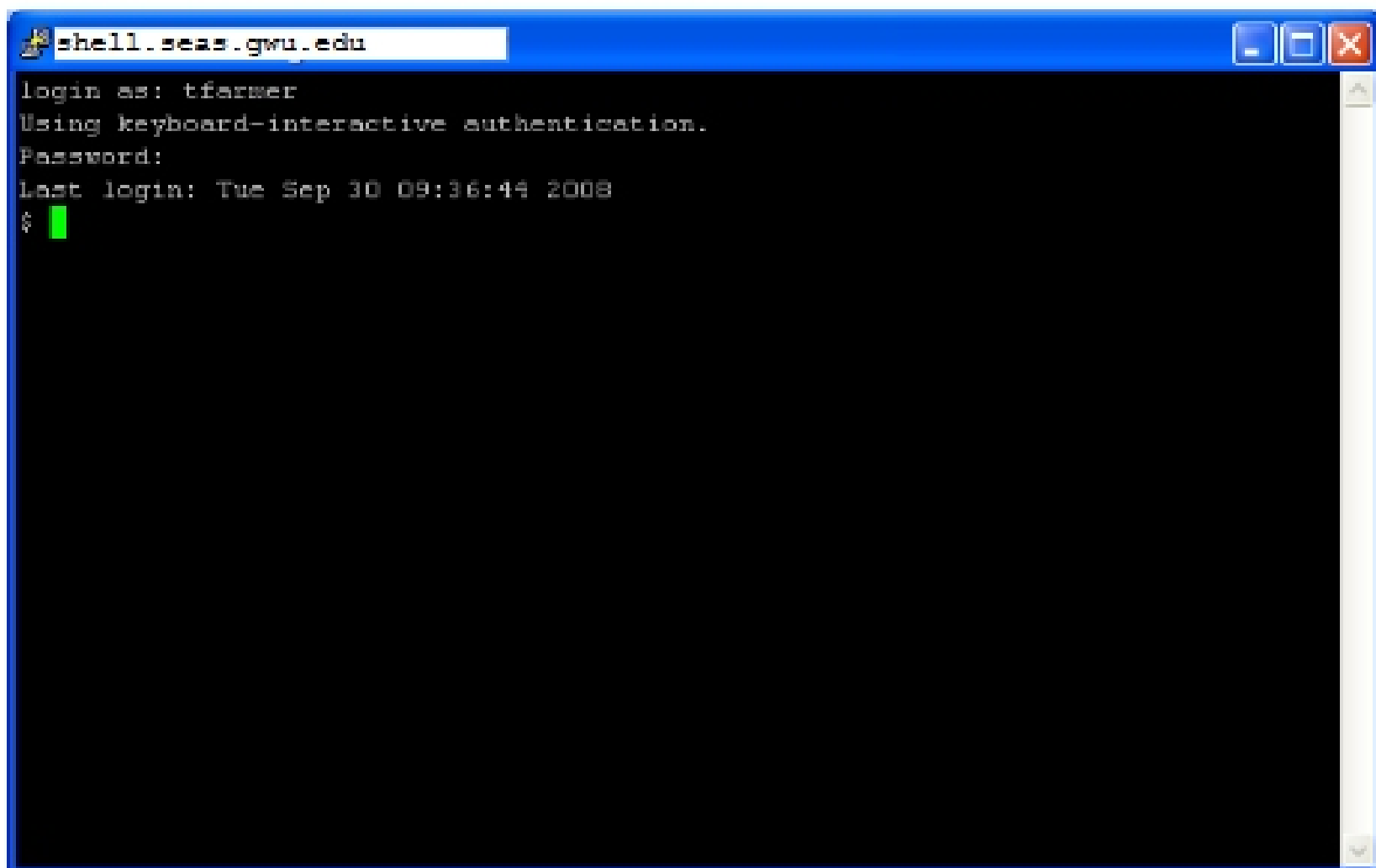
3) Open an SSH connection to the GW server, by pressing: "Open"



- After Pressing Save, press the "Open" button
- The first time putty connects to the GWU server, a message like this will appear, press YES



- Login using your SEAS username and password:
- *If you cannot login, contact your GTA for assistance, you need to be added to a remote access group to use the GWU remote access server.*



```
shell.seas.gwu.edu
login as: tfarmer
Using keyboard-interactive authentication.
Password:
Last login: Tue Sep 30 09:36:44 2008
$
```

4) Setup your VNC Port # by copying/pasting this command:

```
~vlsi/course_all/vnc_scripts/update_profile_vnc
```

- *Write down the number that is displayed on the screen (below you see it as XXXXX):*

Your VNC Port number is: XXXXXX

**WRITE THIS # down!**

- *Once you have this number, type in exit to close the session:*

```
exit
```