

Remote Access to Cadence at GWU for ECE 126
10/2008 – Robert Proie

Mac Instructions:

Prerequisites

- You must have X11 installed on your computer. If you do not, the simplest way is to install it from the OS X DVD that came with your computer.
- If you aren't sure whether or not it is installed, go ahead with step 1. If you see an X11 application in your utilities folder, than it is installed.
- If you do not see an X11 application, click on this link for how to install it from your OS X DVD that came with your computer:

http://www.seas.gwu.edu/~vlsi/ece126/FALL/reference/MAC_X11_install_instructions.pdf

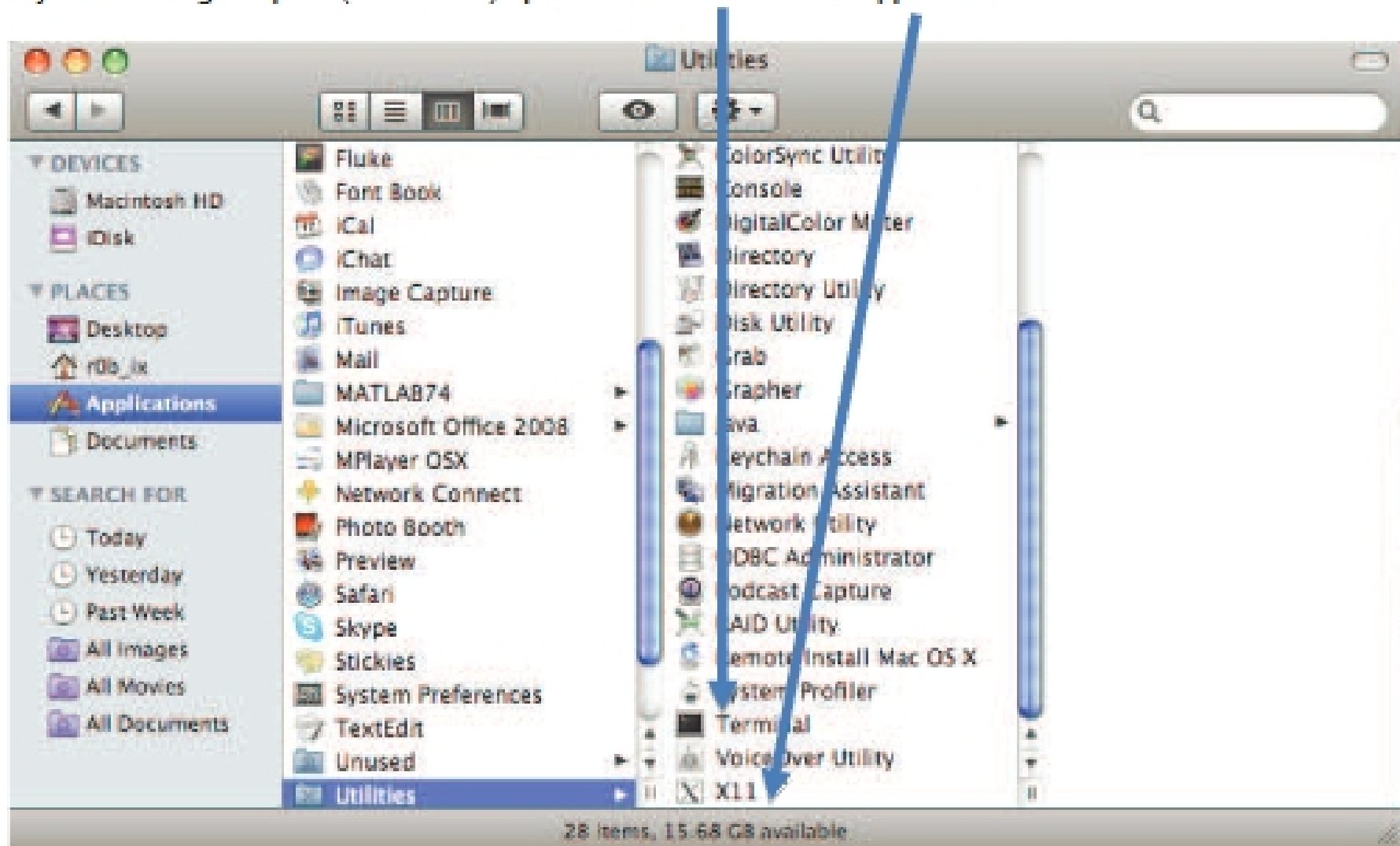
Procedure

1) Opening the command line window:

Navigate to Applications > Utilities

If you are using Tiger (OS X 10.4) open the X11 application.

If you are using Leopard (OS X 10.5) open the Terminal or X11 application.



2) Connecting to the GWU workstation in Tompkins 405:

- At the command prompt that you opened in step 1, type in the following:
`ssh -c arcfour,blowfish-cbc -YC username@hobbes.seas.gwu.edu`

(For the curious)

-c arcfour,blowfish-cbc specifies 2 ciphers that work well with compression

-Y enables trusted X11 forwarding. This is necessary for some graphical applications.

-C enables compression.

- Once logged into `hobbes.seas.gwu.edu`, type in:

