

CS551

Multicast Routing: IGMP

Bill Cheng

<http://merlot.usc.edu/cs551-f12>

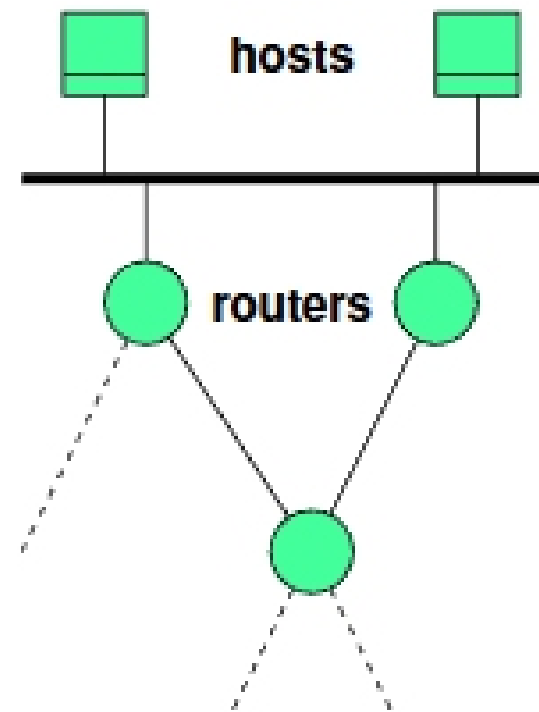


Components of the IP Multicast Architecture

service model →

*host-to-router
protocol (IGMP)*

multicast routing
protocols (various)



Internet Group Management Protocol (IGMP)

- ➔ the protocol by which hosts report their multicast group memberships to neighboring routers
- ➔ version 1, the current Internet Standard, is specified in RFC-1112
 - version 2: RFC 2236
- ➔ operates over broadcast LANs and point-to-point links
- ➔ occupies similar position and role as ICMP in the TCP/IP protocol stack

