

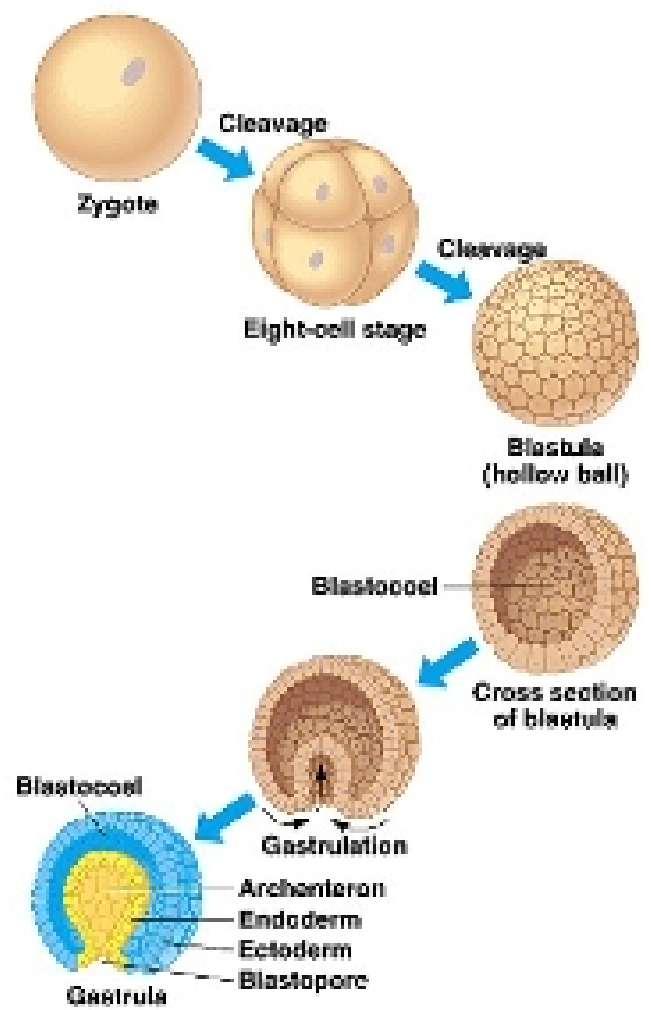
Biology Practical 2

Omar Harris

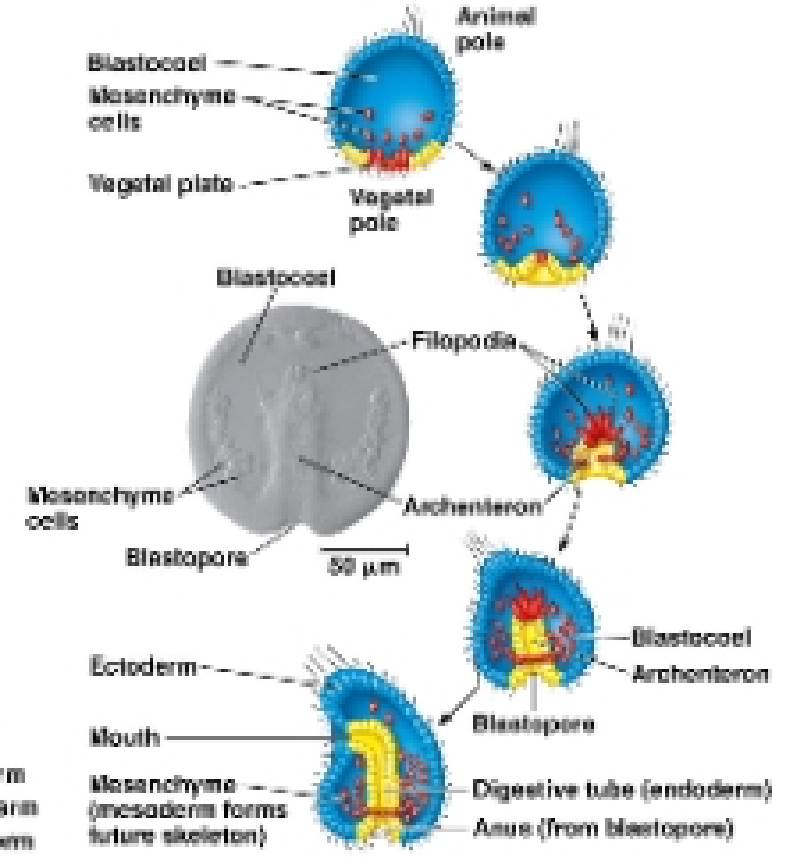
Animal Development

- Fertilization - Zygote
- Vitelline layer- Fertilization membrane
- Cleavage- Mitosis
- Morula
- Blastulation (blastula), Blastocoel
- Gastrulation (gastrula), Blastopore, Archenteron (primitive gut)
- Ectoderm: outer layer; skin, associated glands, neural tube
- Mesoderm: middle layer; muscles, skeleton, gonads, excretory system, circulatory system, coelom lining
- Endoderm: inner layer; lining of the digestive tract and associated organs
- Neurulation: Neural plate/groove/folds/tube (seen in the frog)
- Organogenesis: formation of organs (seen in the chick slides)
- Morphogenesis: formation of body plan (seen in the chick slides)

Animal Development

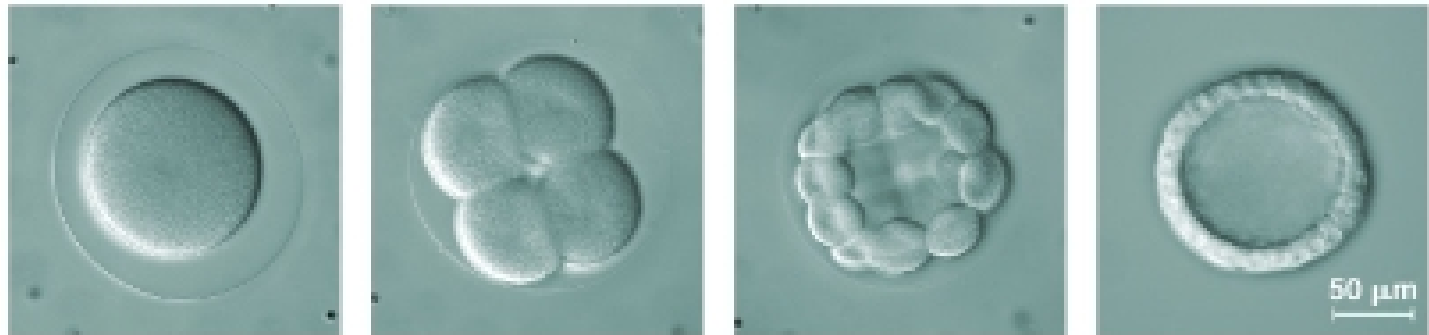


Copyright © Pearson Education, Inc., publishing as Benjamin Cummings.



Key

- Future ectoderm
- Future mesoderm
- Future endoderm



(a) Fertilized egg (b) Four-cell stage (c) Early blastula (d) Later blastula