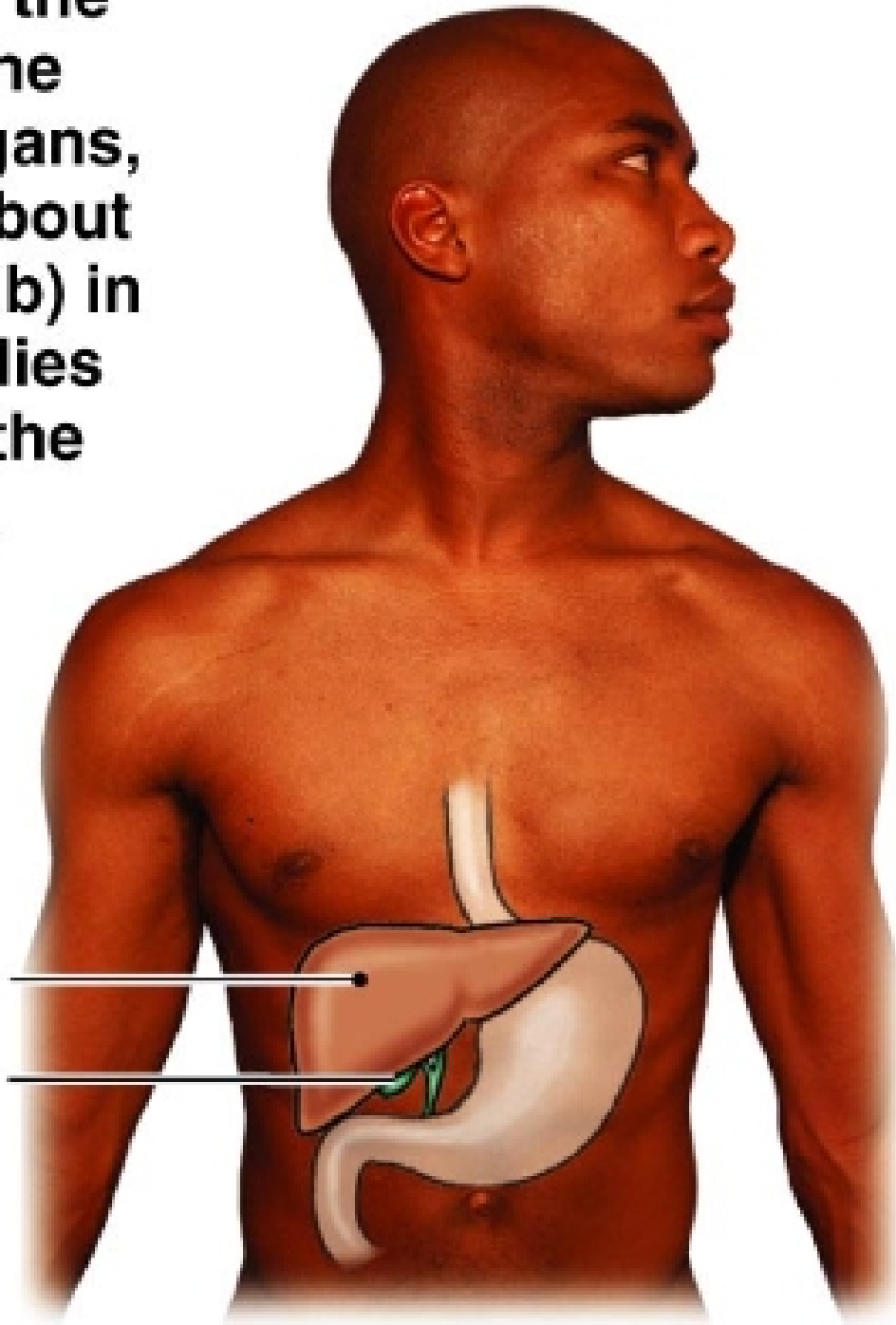


The Liver

- A “chemical factory”, an excretory system, an exocrine gland, and an endocrine gland.
- The liver plays a key role in handling foodstuffs assimilated by the small intestine.
- Receives portal blood from the stomach, small intestine, large intestine, pancreas, and spleen.

(a) The liver is the largest of the internal organs, weighing about 1.5 kg (3.3 lb) in an adult. It lies just under the diaphragm, toward the right side of the body.

Liver
Gallbladder



Copyright © 2007 Pearson Education, Inc., publishing as Benjamin Cummings.

Figure 21-10a

Heptoportal Circulation

