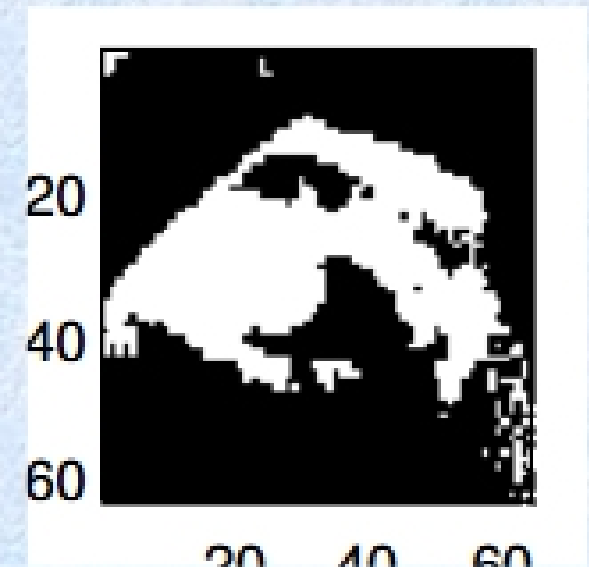




# Image Segmentation

# What is Image Segmentation?

- Segmentation:
  - » Split or separate an image into regions
  - » To facilitate recognition, understanding, and region of interests (ROI) processing
- Ill-defined problem
  - » The definition of a region is context-dependent





# Outline

- Discontinuity Detection
  - » Point, edge, line
- Edge Linking and boundary detection
- Thresholding
- Region based segmentation
- Segmentation by morphological watersheds
- Motion segmentation