

Consider the two 512 x 512 luminance (8-bit) images below, named "Landsat" and "Girl".

Original Landsat Image

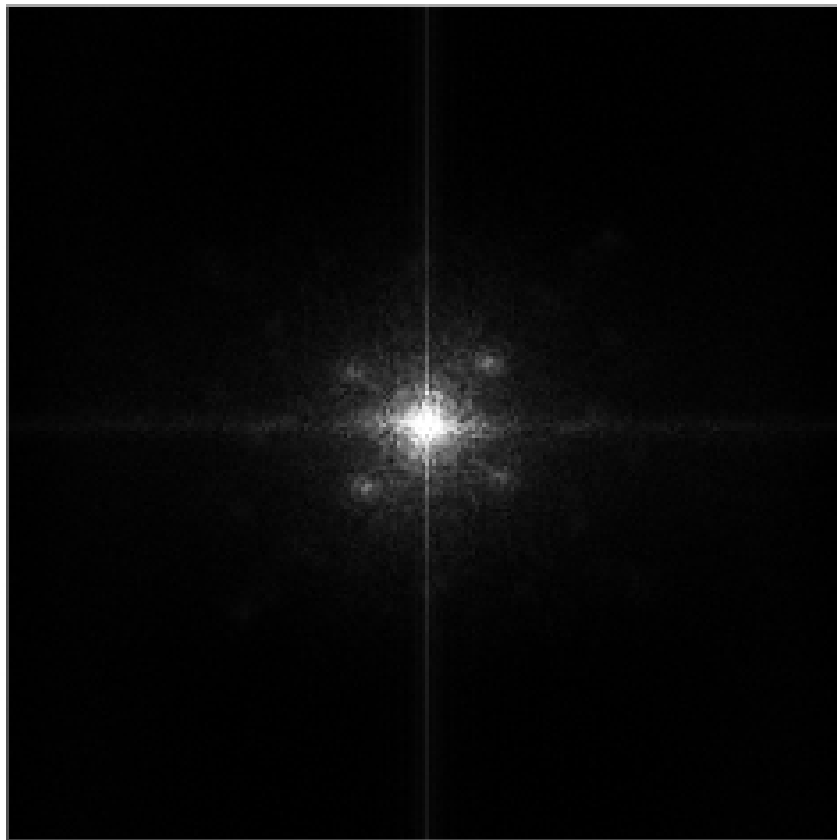


Original "Girl" Image

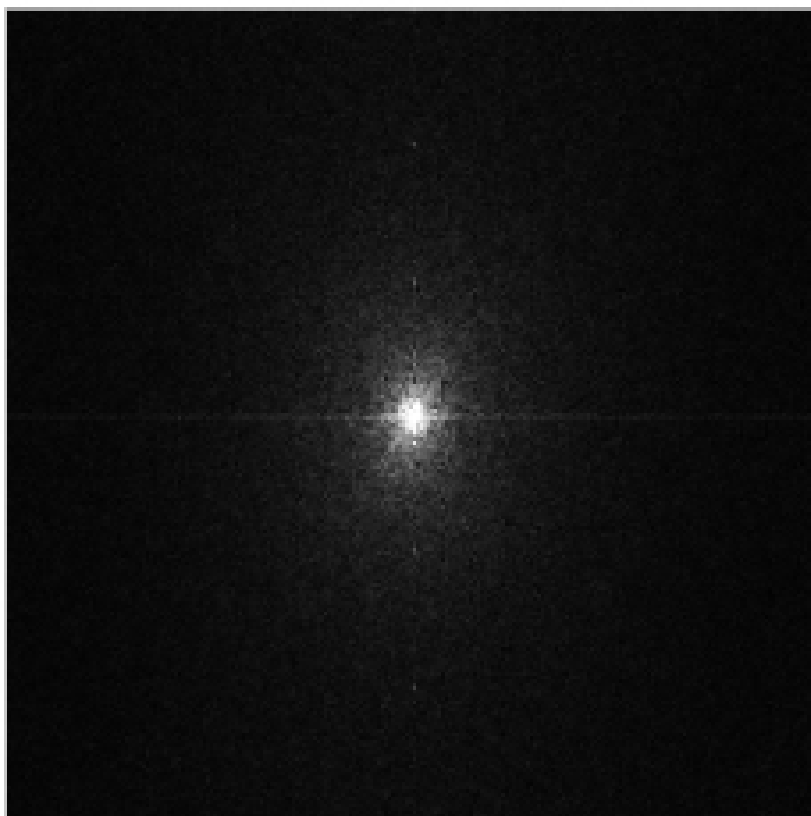


Next, take the two-dimensional Fourier transform of each image. The magnitude and phase look as follows (suitably scaled and shifted).

Girl DFT Magnitude

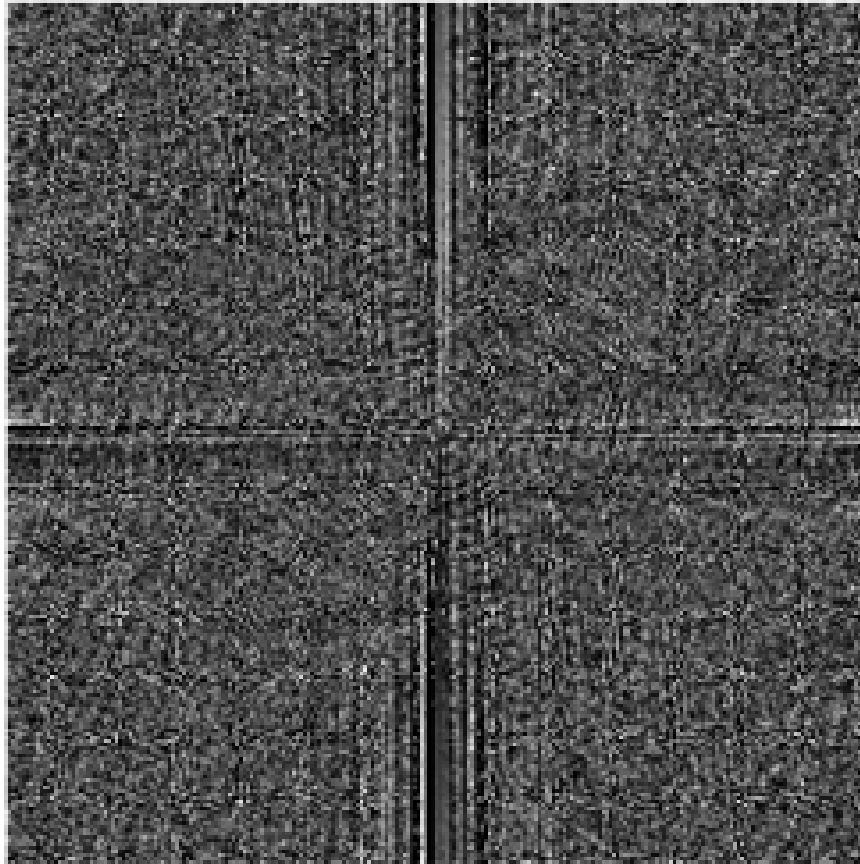


Landsat DFT Magnitude



Girl Image DFT Phase

Phase of Girl Image DFT



Landsat Image DFT Phase

Phase of Landsat Image DFT

