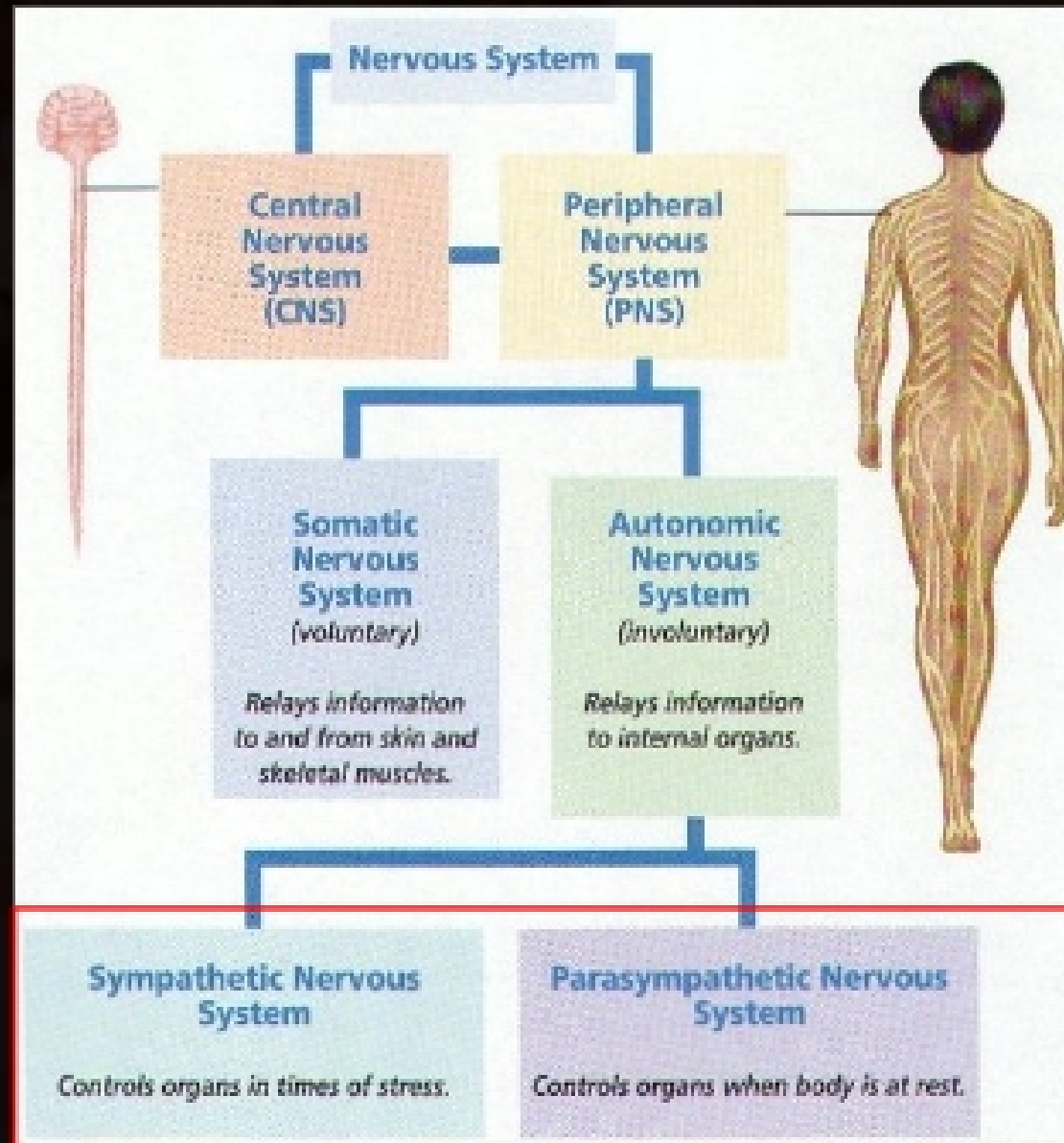
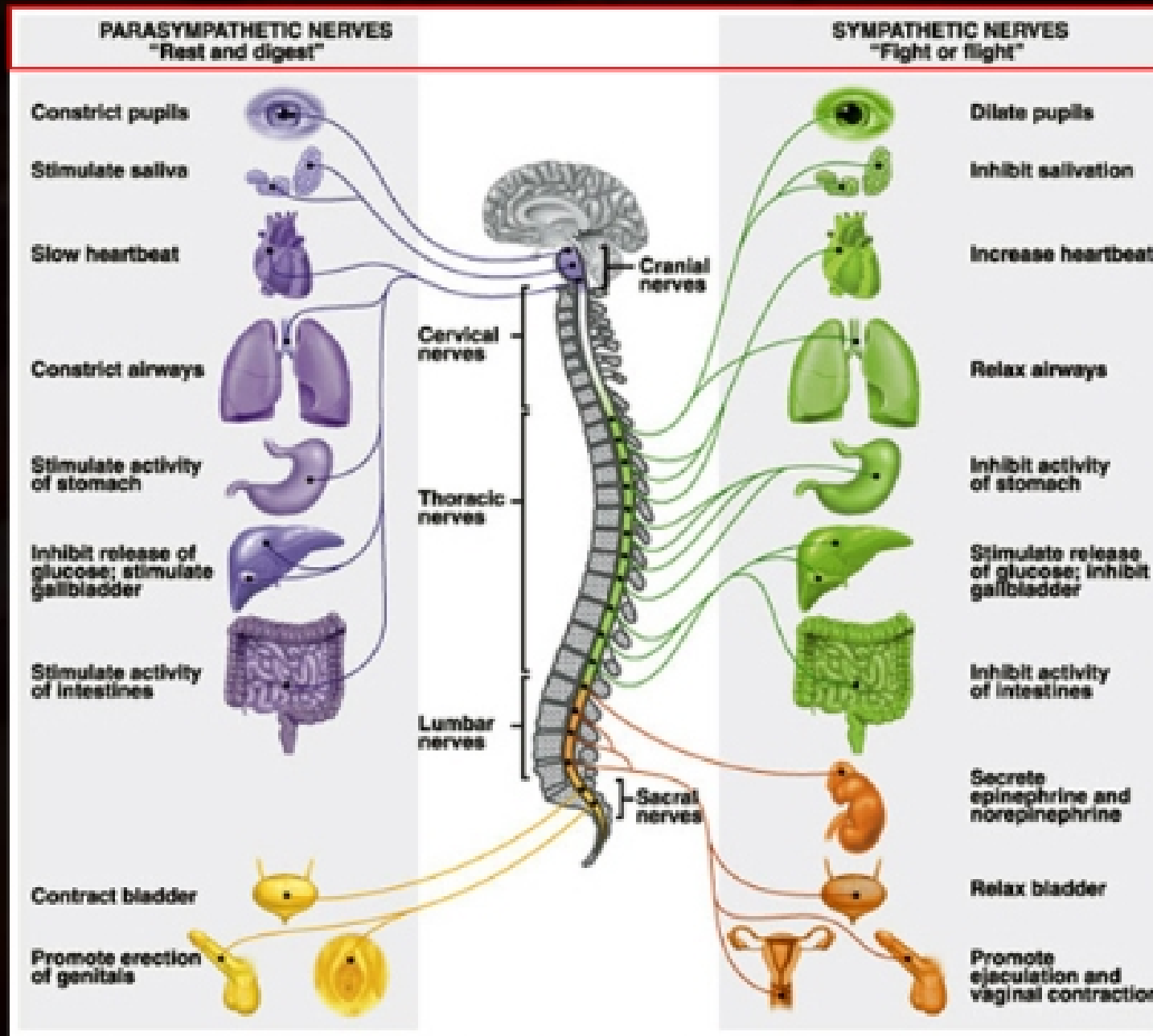


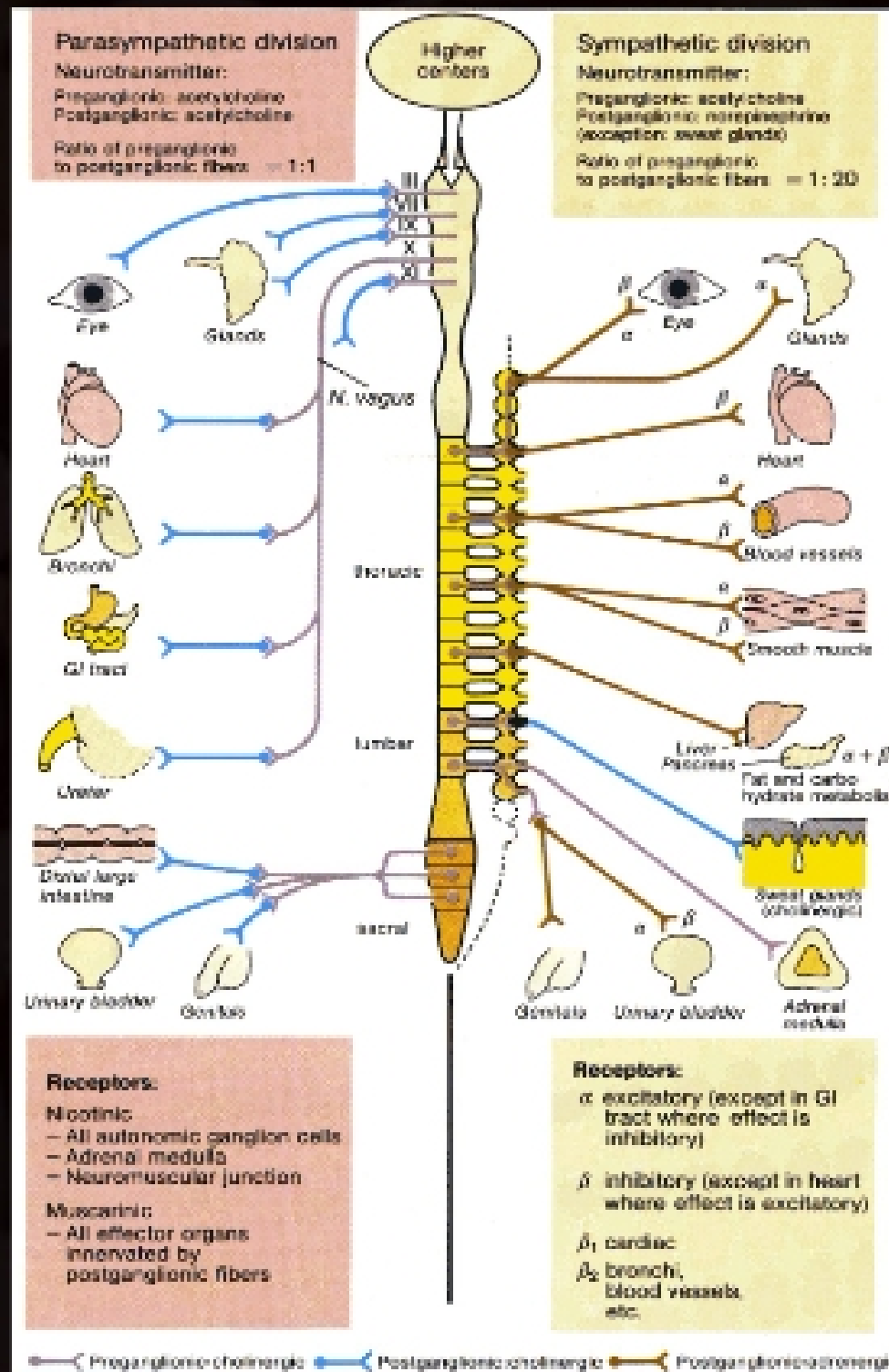
# Autonomic Nervous System



# Autonomic Nervous System



# Autonomic Nervous System



- **Ganglia** close to the innervated organs

- Myelinated axons

- **Ganglia** close to the spinal column

- Preganglionic axons are myelinated; postganglionic axons are unmyelinated

- **Note:** Somatic nervous system has no ganglia!