

CS-184: Computer Graphics

Lecture #13: Curves and Surfaces

Prof. James O. Brian
University of California, Berkeley

© 2011

Today

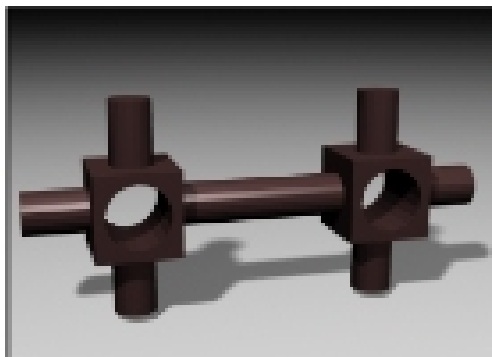
- General curve and surface representations
- Splines and other polynomial bases

Geometry Representations

- Constructive Solid Geometry (CSG)
- Parametric
 - Polygons
 - Subdivision surfaces
- Implicit Surfaces
- Point-based Surface
- Not always clear distinctions
 - i.e. CSG done with Implicits

•

Geometry Representations

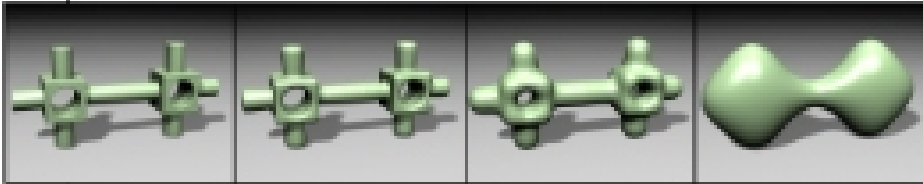


Object made by CSG
Converted to
polygons

•

Geometry Representations

Object made by CSG
Converted to polygons
Converted to implicit surface



Geometry Representations

CSG on implicit surfaces

