

CS 2710 Foundations of AI
Lecture 12

Logic reasoning systems

Milos Hauskrecht

milos@cs.pitt.edu

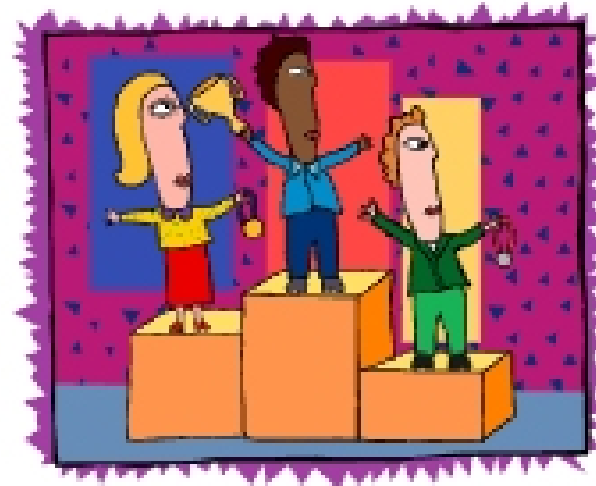
5329 Sennott Square

Administration

- **No class next week**
- **PS-5:**
 - **Due on Thursday, October 14, 2004**
 - **Submit directly to Tomas Singliar**
- **Midterm:**
 - **October 19, 2004 during the class**
 - **Closed book**
 - **Covers:**
Search and Knowledge Representation

Optimization competition winners

CS2710 Homework 3



CS 2710 Foundations of AI

Genetic Algorithm



1. Yan Wang



2. Swapna Somasundaran



3. Mahmoud Elhaddad

CS 2710 Foundations of AI

Simulated annealing



1. Jose Nunez-Varela



2. Yang Wang



3. Swapna Somasundaran

Honorable mentions:

- Jose Baiocchi
- Mahmoud Elhaddad
- Lin Qi
- Jonathan Misurda

Knowledge-based system

Knowledge base
Inference engine

- **Knowledge base:**
 - A set of sentences that describe the world in some formal (representational) language (e.g. first-order logic)
 - Domain specific knowledge
- **Inference engine:**
 - A set of procedures that work upon the representational language and can infer new facts or answer KB queries (e.g. resolution algorithm, forward chaining)
 - Domain independent