

Tutorial **on** **“Operations on Database using JDeveloper”**

By
Naga Sowjanya Karumuri

About Tutorial:

The main intension of this tutorial is to introduce JDeveloper to the beginners. It gives basic details and features of JDeveloper like connecting to database and creating applications. In a word- it shows you how to use JDeveloper to perform offline database development.

The tasks you learn by the end of this tutorial:

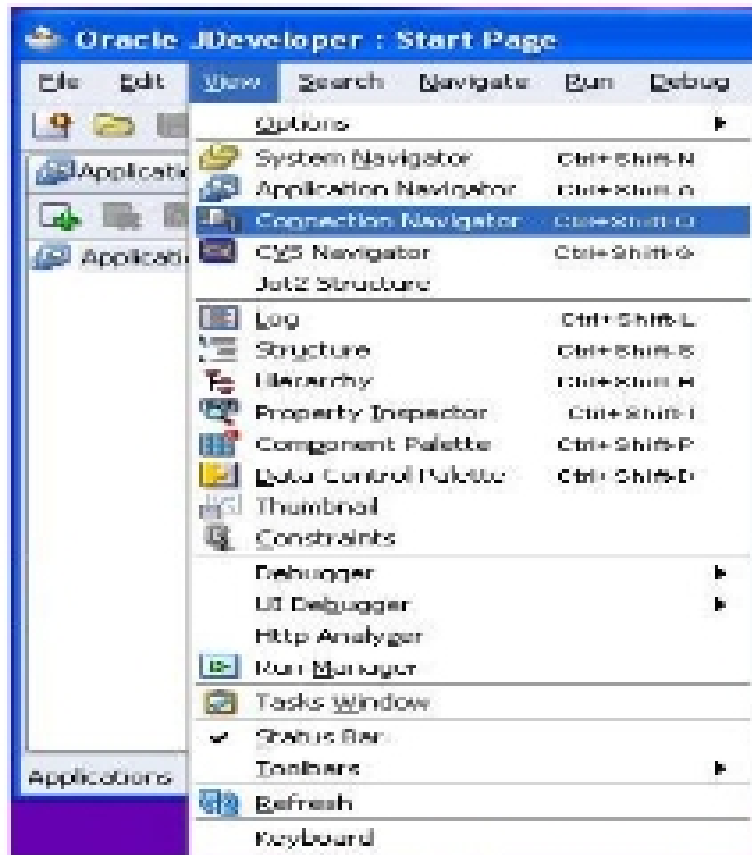
- Creating a Database Connection through JDeveloper
- Creating the Model Project
- Modeling Offline Database Objects
- Creating PL/SQL Objects in the Database

Let us look at the above mentioned steps in brief with clear pictures.

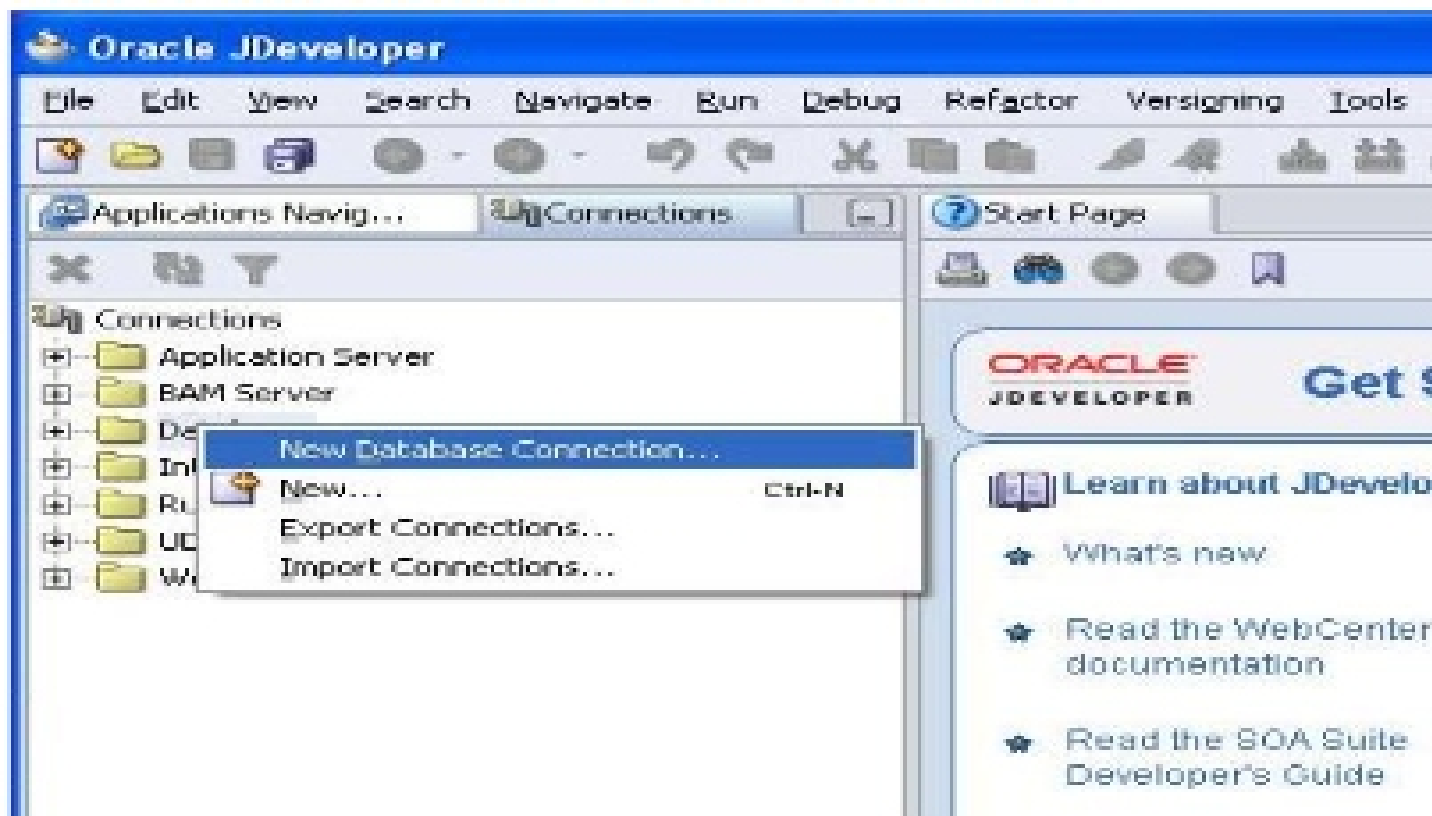
Creating a Database Connection:

In order to access the database of our university, one has to initially establish a connection to the SQL server. The following steps teach establishing such a connection through JDeveloper.

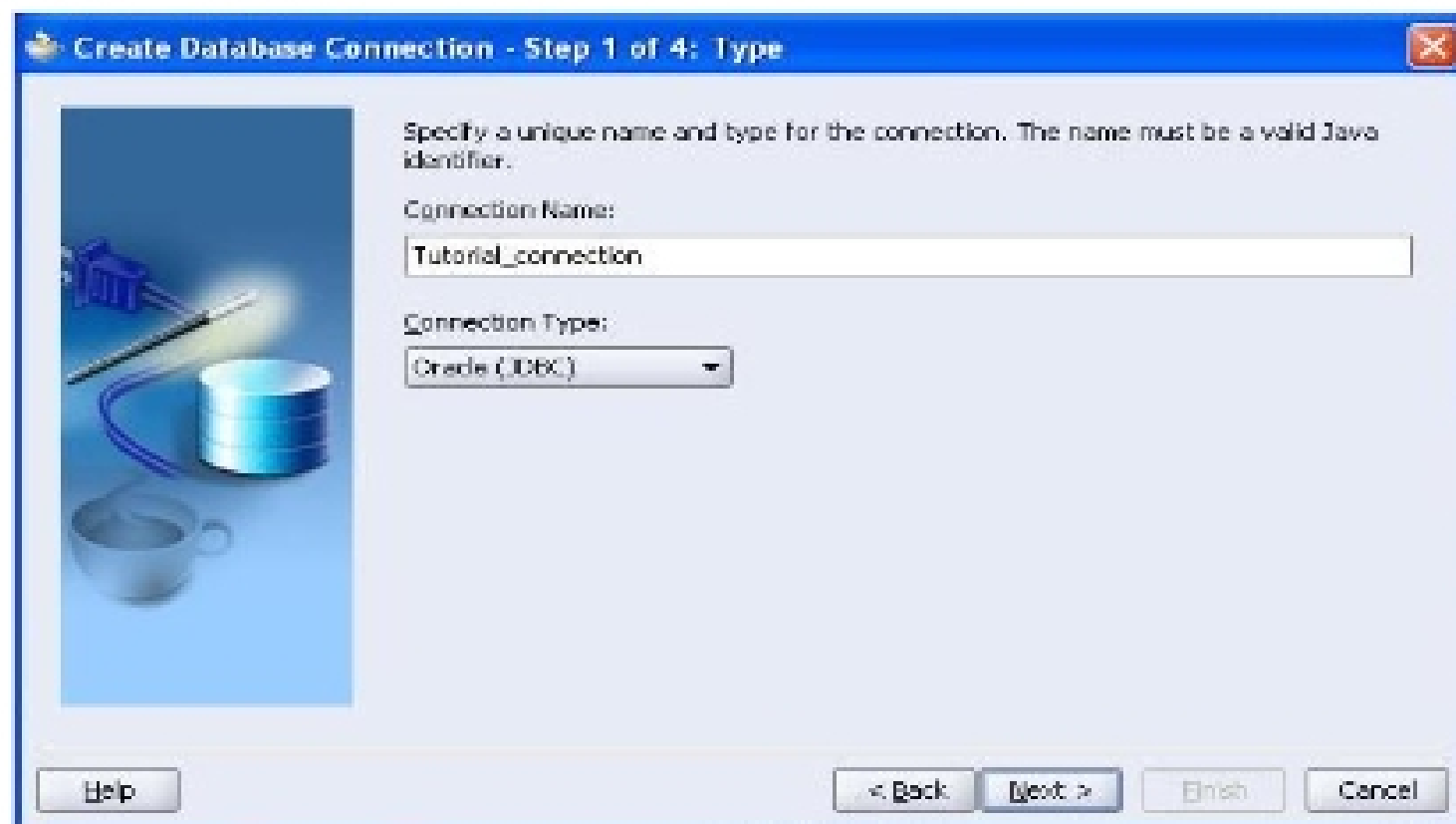
1) Open JDeveloper and click on the “Connections” Tab. A Connection Navigator appears else you can open one by Clicking View>Connection Navigator.



2) The Connection navigator appears and to make a new connection to the database, right click on the “Database” and choose “New Database Connection”.



3) A page appears with the title “Create Database Connection”. Click “Next”. In this page you can name the connection which you will be establishing. In the picture shown we are establishing a connection with the name “Tutorial_connection”. Click “Next”.



In that page enter your username (which is usually your e-id) and password. Leave the field “Role” blank. Make sure you check the “Deploy password” option. Click “Next”.

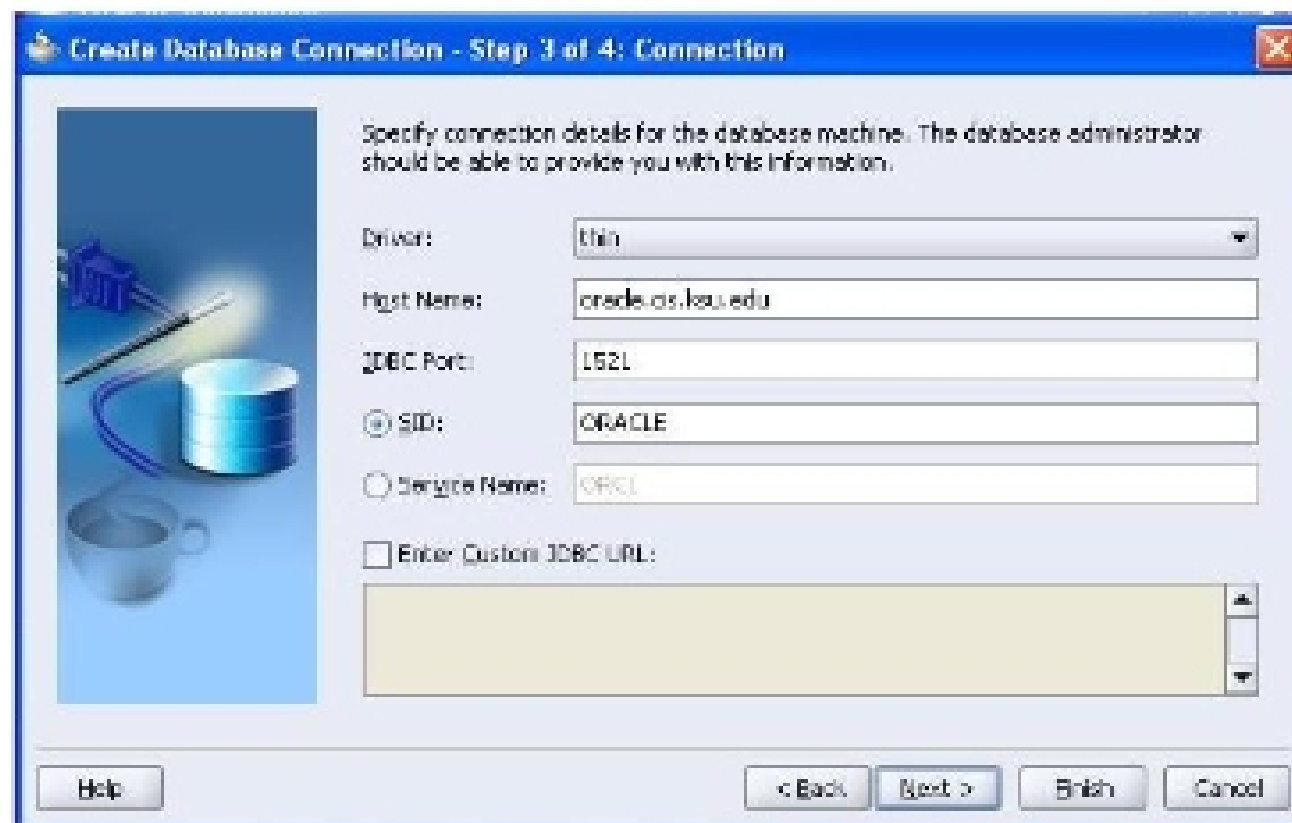
4) There appears the “Step 3 of 4: Connection”. Fill in the following details in the page.

Driver: Thin

Host Name: oracle.cis.ksu.edu

JDBC Port: 1521

SID: ORACLE



Leave the other fields blank and click “Next”.

5) This is the last step to establish the connection. In this you click “Test Connection” in order to make sure that the connection is successfully established or not. Once the Status is shown as “Success!”, click “Finish”.