

Tissues Anatomy Overviews & Animations

Epithelial Tissues

Directions:

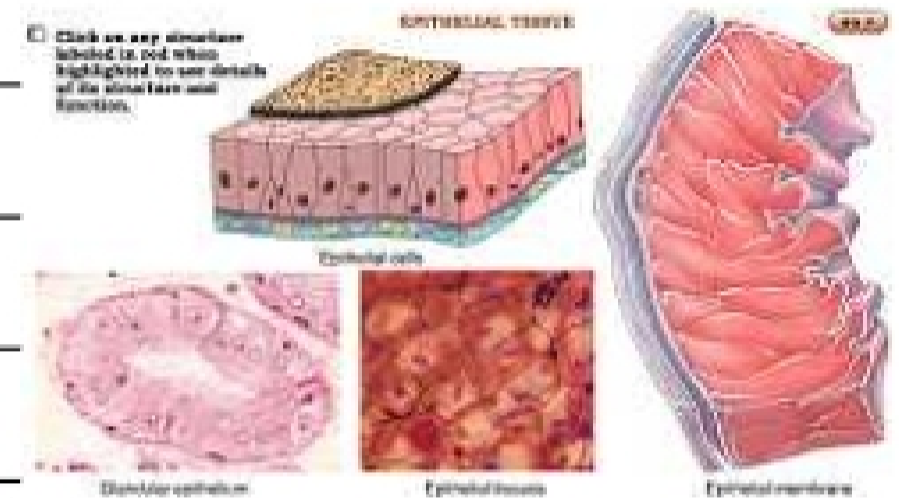
Insert and install your Interactions: Foundations CD.

- Click the "Contents" button,
- Open the Tissue Level of Organization file,
- Click on Anatomy Overviews,
- Work through Epithelial Tissues.

Complete the following worksheet and add it to your notes.

I. Interactions Foundations CD/Contents/Tissue Level/Anatomy Overviews/Epithelial Tissues

1. Where are *epithelial tissues* found? _____

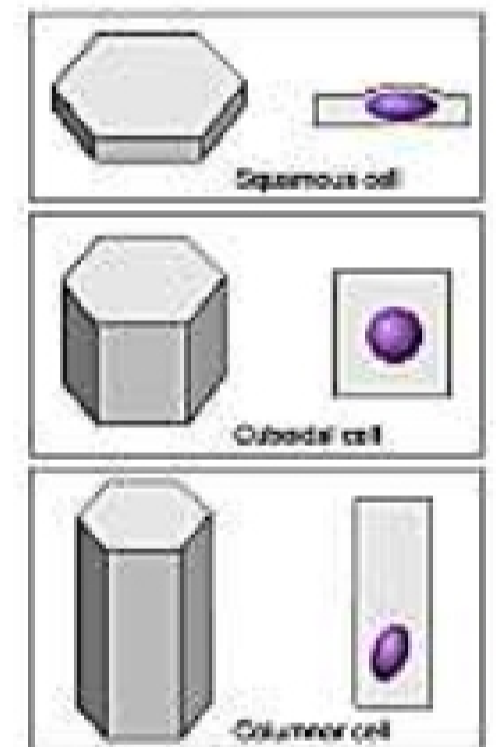


2. Describe these three basic shapes of *epithelial cells*:

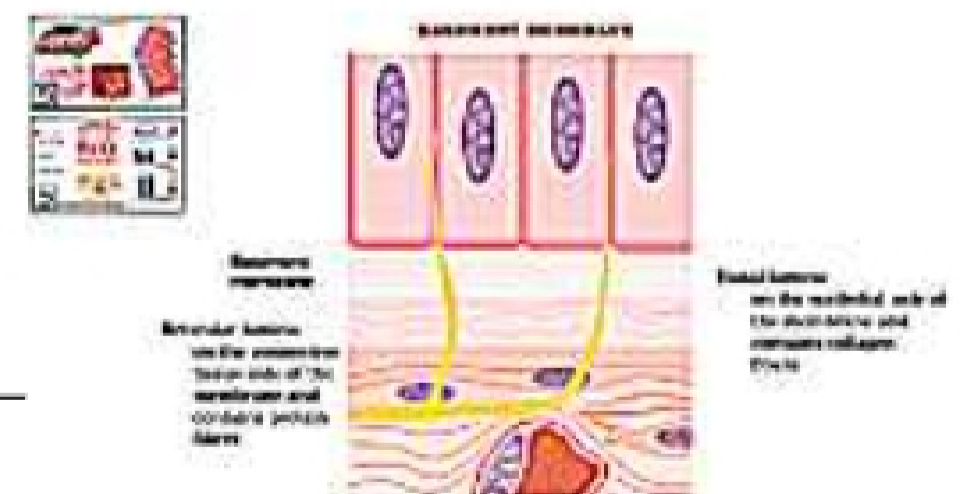
squamous: _____

cuboidal: _____

columnar: _____



4. Describe the positional relationship between the *epithelial surface cells*, *basal surface*, *basement membrane*, and *connective tissue*.



5. Describe each of the following *epithelial tissue* arrangements:



simple: _____

stratified: _____

pseudostratified: _____

transitional: _____

6. Observe and describe each of the following tissues. Name example(s) of where each can be found and describe the function of each. You should be able to identify each epithelial type by sight. Study their appearance and characteristics. Correlate their physical structure with their function.

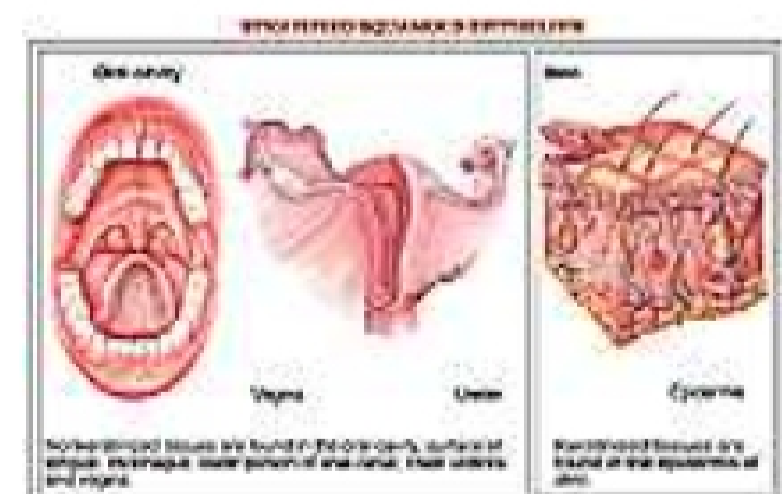
simple squamous epithelium: _____



stratified squamous epithelium: _____

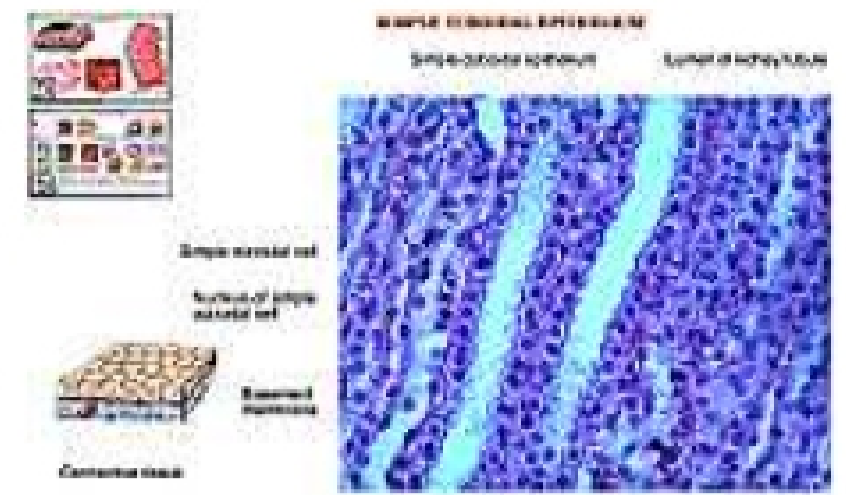


Keratin is a water proofing protein. What are the functions of *keratinized* and *nonkeratinized* stratified squamous epithelium.

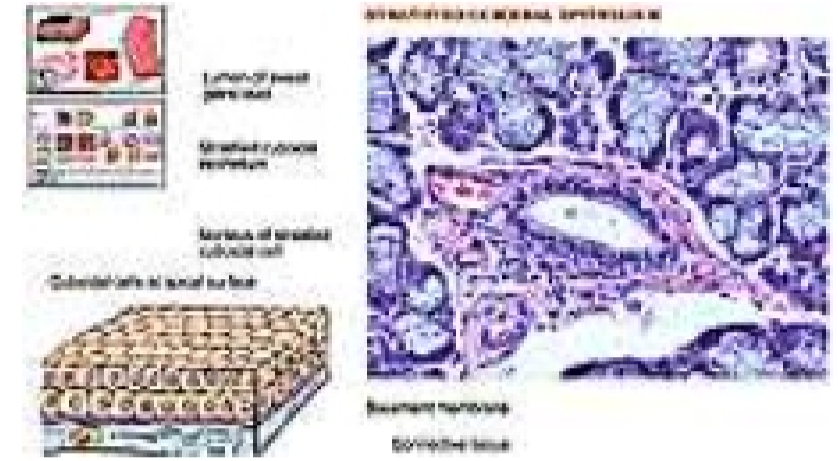


Where are each found? _____

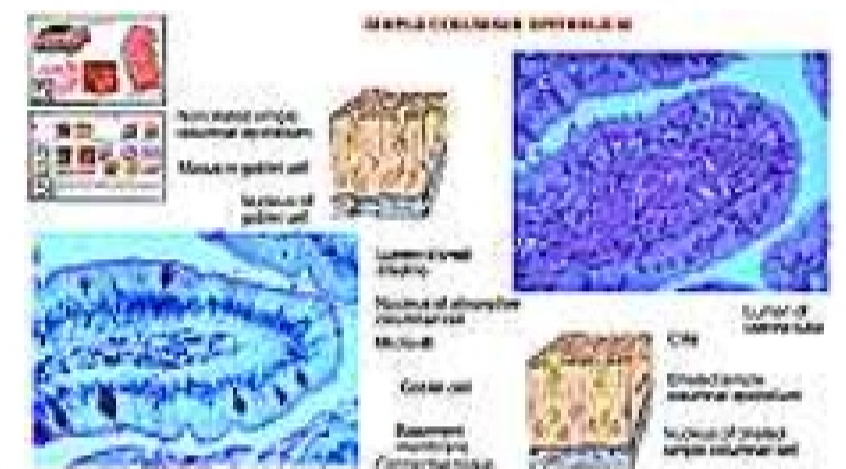
simple cuboidal epithelium: _____



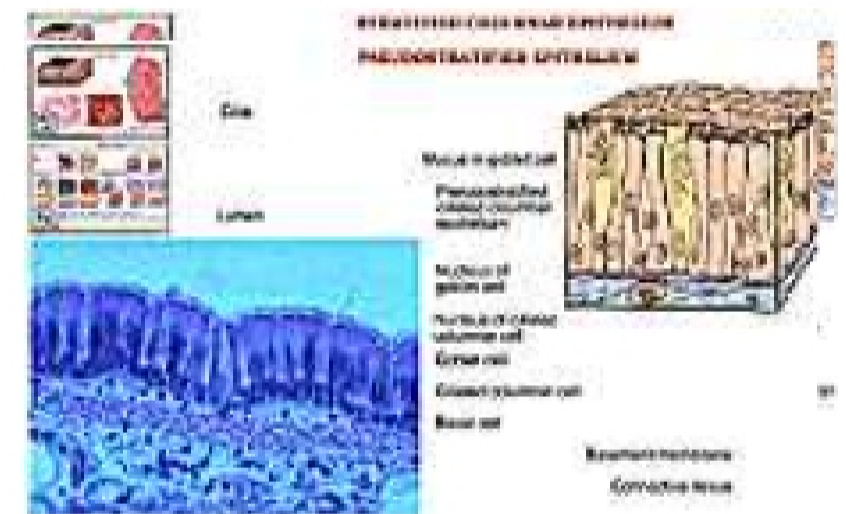
stratified cuboidal epithelium: _____



simple columnar epithelium: _____

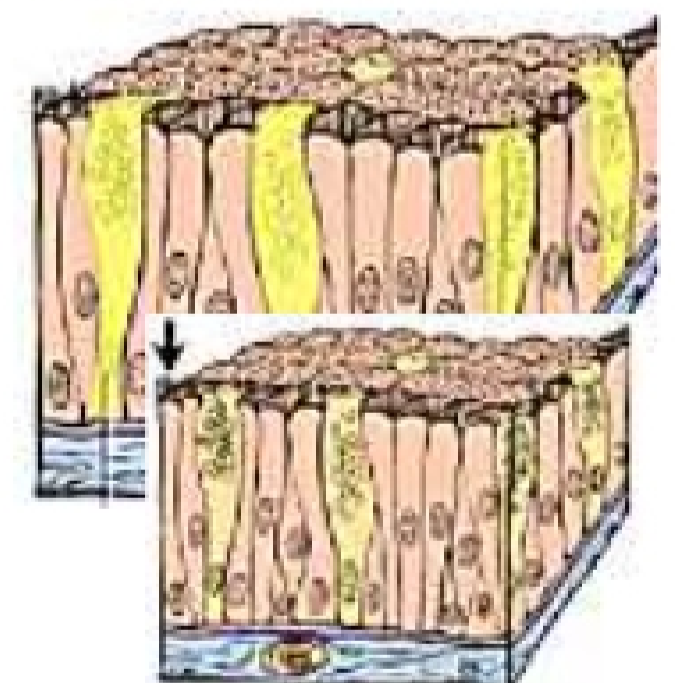


pseudostratified columnar epithelium: _____



What is the function of *goblet cells*? _____

What is the function of *cilia* (when present)? _____



transitional epithelium: _____

